

**TRADES**



## **Trades Solutions Developments**

**Designing and Building For All Nations**

**Cameron Andreas**  
**Trades Solutions Developments**  
**President & Owner**  
**306.737.0912**  
**[tradessolutions.ca@gmail.com](mailto:tradessolutions.ca@gmail.com)**





# Trades Solutions Developments

## Designing and Building For All Nations

Architecture Complete Builds Lumber Windows

Doors Electrical Leadership Education

Apprenticeship Painting

Renovations Landscaping Roofs

Values

Solar – Energy



Building the future  
Broad Vision  
Careful Thought  
Hand-crafted design

## MAKING YOUR VISIONS COME TO LIFE



Building futures for Generations to come

### Our Services

Trades Solutions Developments offers custom builds.

- ✓ Build with local people
- ✓ Career training for long term employment
- ✓ Design build to local code and qualified inspectors



### Designing and Building For All Nations

Cameron Andreas

Trades Solutions Developments

President & Owner

306.737.0912

[tradessolutions.ca@gmail.com](mailto:tradessolutions.ca@gmail.com)





---

# **Trades      Solutions      Developments**

---

## **Designing and Building For All Nations**

Cameron is a construction professional with over 25 years experience in industrial, commercial and residential construction. As president and chief executive officer of Trades Solutions Developments Cameron is responsible for all aspects of the organization's performances.

Throughout his 25 years career and prior to founding Trades Solutions Developments, he worked as a coordinator in Regina, SK. Cameron with progressive management responsibilities worked in operations and project management roles focusing on the commercial and contract areas.

Cameron is an effective communicator, motivator and negotiator and is comfortable commercing with vendors, customers and coworkers; this comfort lead him to a awarded numerous sales and management achievements from Access Communications, Evolutions Electric and Rush Electric in Regina, SK.

Trades Solutions Developments is responsible for the facilitation from start to finish of the labor, material and equipment, for each project creation. Trades Solutions Developments hires only licensed and bonded trades personal for professional quality of each job regardless of job size.

Trades Solutions Developments offers a new approach to trade persons' success with the Apprentice to Journeyperson education. All apprentices are educated by qualified and skilled teachers on the job and classroom setting for all Nations and all ages. Special attention given to motivation and understanding for each apprentice for effective success in their trade of choice.

Trades Solutions Developments with leveraging years of experience, facilitates, confidentially advises and aligns their clients' budget to the wants and specifications of the clients build. Trades Solutions Developments takes the worry out of building for clients by taking on all responsibilities of the build from start to finish. Responsibilities do include such as permits, security of all properties on site, blue prints, temporary utilities on site, management of personal on site, recycling of construction waste, and maintain accurate (open-Book) records.

Cameron's vision through Trades Solutions Developments is to create a future for all First Nations men and women with the Apprentice Program. The Apprentice Program will provide skills to all students for a sustainable future filled with pride of a job and education giving a sense of peace and comfort to themselves and families.



## **Designing and Building For All Nations**

**Cameron Andreas**

**Trades Solutions Developments**

**President & Owner**

**306.737.0912**

**[tradessolutions.ca@gmail.com](mailto:tradessolutions.ca@gmail.com)**



---

# **Trades      Solutions      Developments**

---

**Designing and Building For All Nations**

Trades Solutions Developments is a company focused on establishing industries and revenue to the present and future of all Nations.

These are the divisions we have established to provide revenue and residential and commercial establishments for our clients.

## **Architecture Division**

- \* Residential
- \* Commercial
- \* Custom Design
- \* Sub-division developments
- \* Residential and commercial structural, architectural, construction, and electrical engineered blue prints.

## **Housing Division**

- \* Wood frame
- \* Modular
- \* Ready to move (RTM)

## **Lumber Yard**

- \* All lumber assigned grade No. 1
- \* Trusses
- \* All lumber building material

## **Framing Division**

- \* Professional framing team

## **Windows & Doors**

All windows are certified energy efficient and custom fitted

- \* Interior and exterior doors – all custom made styles are available
- \* Windows – all style and designs are available

## **Electrical & Plumbing Division**

All electrical and plumbing materials

- \* Journey person available

## **Roof Division**

All roofing material

- \* Tin
- \* Shingle

## **Painting Division (residential and commercial)**

- \* Interior
- \* Exterior



---

# **Trades      Solutions      Developments**

---

## **Designing and Building For All Nations**

### **Energy Solar Division**

**Partnered with another company for major solar projects**

- \* Residential**
- \* Commercial Solar units**
- \* Farm yard Solar**
- \* Windmills**

### **Furniture Division**

- \* Residential**
- \* Commercial**

### **Landscaping Division**

**Design and restructure landscapes**

### **Divisions for the Future**

- \* Concrete Plant**
- \* Heavy Equipment**

### **Apprentice Division**

**\*1<sup>st</sup> year apprentices shall mentor all year through to journeyperson to Red Seal qualifications.**

**\*All apprenticeships to Red Seal will be certified under the Canadian Apprentice Regulatory System CAF-FCA.**

**(SCSA) Saskatchewan Construction Safety Association will be available for certification for all employees.**

### **Leadership**

**We are diligent about realizing our vision to lead the industry and set standards in each area of our business. We are ready to take on challenges and develop our capabilities to create more value for our customers.**

### **Excellence**

**We strive for excellence in every aspect of our business. We deploy top – notch technologies that enable us to make the best of our expertise. We don't aim to meet quality standards; we endeavor to surpass them. We firmly believe that our excellence is enhanced by the dedication and commitment of our people.**

### **Interpersonal Understanding**

**We enjoy a multicultural environment. Our belief centers around a core of mutual respect, trust and honesty which boosts team work among all employees.**

### **Professionalism and Integrity**

**Our Business decisions and actions are framed by ethics and moral values as well legal requirements.**



---

**Trades      Solutions      Developments**

---

**Designing and Building For All Nations**



## **Construction Apprenticeship Program**



**If you enjoy working with your hands, teamwork, and supporting your community;  
this program is for you.**

The Construction Apprenticeship Program makes room from grade 11 to any age that has the desire to work in the construction industry. The half class/half on the job training is a career with long stable employment. You will be working with qualified trade personal in all aspects of the construction process from roof to foundation.

(AAI)Aboriginal Apprenticeship Initiative promotes access to apprenticeship training and understanding of the trades as a career.

This is a unique program which brings the classroom to life with real work experience, hours and development. The skills you will learn give you the potential for part-time or full-time employment.

Approximately 85% of apprentice training takes place in the workplace. The employer provides the broad range of work experience that apprentices require attaining the level of skill necessary for certification in the trade. This is achieved under the supervision of a certified journey person.

Technology training reinforces the work place experience and may be delivered in a variety of ways. Most often, technical training occurs for a period of eight weeks per-year at one of the provinces technical institutes, such as Saskatchewan Indian Institutes of Technologies, (SIIT).

Academic upgrading to acquire the knowledge base may apply to some applicants to successfully complete technical training; upgrading components can be incorporated into the apprenticeship training program proposal.

Apprenticeship is a formal contract between employee and who is working in a trade and a employer or joint training committee that needs skilled workers. The contract of apprenticeship is signed and registered with the Saskatchewan Apprenticeship and Trades Certification.



**Designing and Building For All Nations**

**Cameron Andreas  
Trades Solutions Developments  
President & Owner  
306.737.0912  
tradessolutions.ca@gmail.com**





---

## Trades Solutions Developments

---

Designing and Building For All Nations

The Saskatchewan Aboriginal Advisory Council uses the following criteria to rank proposals;

- \***Project overview** provides a clear statement of the purpose for developing the proposal.
- \***Identify** how your community/band came to realize the need to provide training or an introduction to the trades; estimates how many people will benefit from this program, etc...
- \***Labor market information** indicates the extent of industry supports and involvements including a list of employers willing to register apprentices.
- \***Implementation strategy** describes the steps to implement the project, including strategies to ensure the apprentices have the reading and math skills to complete the project. For apprentices, refer to the SATCC website: <http://saskapprenticeship.ca/> for minimum education requirements.
- \***Project partners** identify all partners, Aboriginal and non-Aboriginal and roles each will have. Letters of supports from individuals, groups and organizations/associations that have a direct willing to support your project.
- \***Budget** provides a straight forward and comprehensive account of costs indicating direct costs, shared costs, in-kind contributions and the total project costs.

The proposal package includes a template.

### **Benefits:**

- \*Job coaching support
- \*earn wages while you learn and work on the 9 week course
- \*credits towards apprenticeship to achieve journey person certification.
- \*Safety training needed in the work place
- \*Employee Assistance Program support.

### **Mission:**

- \*Introduce individual to quality skills
- \*Long term employment
- \*Create quality professional employees

### **How it works:**

- \*Contact your local housing human resources and get registered
- \*Start 9 week program upon completion you will start the trade selected
- \*Get connected to an employer.



### **Designing and Building For All Nations**

Cameron Andreas  
Trades Solutions Developments  
President & Owner  
306.737.0912  
[tradessolutions.ca@gmail.com](mailto:tradessolutions.ca@gmail.com)



---

# **Trades      Solutions      Developments**

---

**Designing and Building For All Nations**

Trades Solutions Developments (TSD) industrial rate will be a lower percentage used on builds. Percentage is determined by the total cost of the build and it makes percentages fluctuate.

**The Royal Architectural Institute of Canada**

**Saskatchewan Association of Architects (SSA)**

**Percentage of standard build cost:**

<b>Residential</b>	<b>10%</b>
<b>Commercial</b>	<b>10%</b>
<b>Medical</b>	<b>12%</b>

**Architecture Division cost average build is approximate 12% build cost; with TSD 9-11% builds cost.**

**Lumber Division is up to TSD 30% savings and when manufactures on First Nation land the cost goes down and percentage of revenue goes up according to sales.**

**Windows and Doors Division (including custom builds) are up to TSD 40% savings. Manufactured on site automatically becomes a 50% savings/revenue.**

**Electrical and Plumbing Division up to 30-40% savings, with apprentice program in place additional 10% saving cost can be perceived.**

**Energy and Solar Division up to 30-35% savings and government incentives create a larger savings in total.**

**Roof and Siding when retail bought can be up to 25% savings; however with a manufacturing tin machine investment a 50% saving/revenue on products can be made.**

**Paint, Kitchen, Landscaping is determined on build size and needs and can be estimated at TSD 20% savings.**

**Furniture Division (TSDF) reliable furniture and none of the cost TSD 70% savings. To buy retail cost is unlimited and only can achieve a 10-20% savings.**

**Generating revenue is for the future of First Nation now and our children's child. At a ground breaking time First Nations could become the leading manufacturing industry with investments in:**





# Trades Solutions Developments

**Designing and Building For All Nations**

- \* Lumber Yard
- \* Trusses
- \* Electrical
- \* Plumbing
- \* Windows and Doors

**Landscaping and land development can be improved worth strategic placement of mature trees and planting seedlings, making room for the growing residential and commercial growth of any area.**



Disclaimer: Trades Solutions Developments has created this report and has been prepared for the exclusive use and benefit of the receiver and solely for the purpose for which it is provided for. Unless Trades Solutions Developments provided express prior written consent, no part of this should be reproduced, distributed or communicated to any third party. We do not accept any liability if this report is used for a alternative purpose from which it is intended, nor to any third party in respects of it content. Percentages are averaged upon 2017 market value and will fluctuate in regions, volume and industry.



---

# Trades Solutions Developments

---

**Designing and Building For All Nations**

---

Trades Solutions works together with engineers and architects to bring you the full benefit of complete services in one place.

We are prepared to supply complete working plans for renovations, additions and complete blue prints for builds of residential or commercial buildings. From start to finish we will build to your specifications.

We offer and not limited to:

- Engineered Stamped Blue Prints
- Engineered Stamped Foundation Prints
- Engineered Stamped Medical Prints
- Engineered Stamped Electrical Prints
- Code Review By Certified Engineer
- Feasibility Reports

Our engineered staffs have a total collective experience of 75 year in the industry.

The following is a partial list of recent projects complete involving health care facilities.

- ❖ 20 bed personal care home, Indian Head, SK.
- ❖ 10 doctor medical center, Melville, SK.
- ❖ Lab and CD unit renovation, Deer lodge, Wpg, MB.
- ❖ Bethesda Tub Room renovation, Wpg, MB.
- ❖ YFFN Nurse Station and nurse residents, York Station, MB.
- ❖ HSC Seclusion Centre, Wpg. MB.
- ❖ 2 resident care homes conversions, Regina, SK.
- ❖ Medical offices and Pharmacy, Saskatoon, SK.
- ❖ Medical offices and Pharmacy, Pilot Butt, SK.
- ❖ 3 medical offices/clinics, Regina, SK.
- ❖ 4 new resident care houses, Regina, SK.
- ❖ Focus Eye Care Center, Regina, SK.
- ❖ Aura Dentist office, Regina, SK.
- ❖ Kelvington Hospital upgrade, Kelvington, SK.
- ❖ St. Dominic Savio Assistant Living, Wayburn, SK.
- ❖ Saskatchewan Abilities Council renovations, Regina, SK.

We do all commercial and private builds for example:

- ❖ Fire Hall, Kipling, SK.
- ❖ Kipling School, Kipling, SK.





**Trades Solutions Developments**

**Designing and Building For All Nations**

Cameron Andreas  
Trades Solutions Developments  
President & Owner  
306.737.0912  
tradessolutions.ca@gmail.com



## SOLAR ENERGY

### SOLAR SYSTEMS

We are committed to improving the lives of all those who interact with our brand in the community we operate in.

WIND and SOLAR working together

The sun only shines during the day; wind blows intermittently and is seasonal variable it is not always blowing. When energy is needed our solution brings sun and wind together. Solar Energy works for you and is a viable solution for everyone.

#### Solar

- 14 300W Mono-Crystalline Star Panels
- Peak AC Output Power: 550Wp
- 240V/280V/60Hz or 230V and 50Hz
- System Efficiency: 95.5%
- Pro designed - 4240W – Micro Inverter

#### Wind Turbine

- 400 – Watt
- Fully water proof
- Intergrated regulator automatically shuts down the turbine To minimize wear
- Light weight cast aluminum for high durability recovery

#### All Guaranteed

- 10 year warranty (extensions to 25 years)
- Training to all customers for service and maintance
- Automatic fault detection, protection and recovery system



\*Solar Home System  
\*Back-up Inverter System  
\*Solar Components  
\*Solar outdoors lighting  
\*Solar thermal system  
\*Solar water pump

As part of efforts to go green Pheasant Rump Nakota First Nation has 56 Solar panels installed on 5 community buildings.

#### Why solar

Renewable energy sources like Solar reduces your homes' carbon footprint.

#### Environmentally Responsible

Solar power is clean and does not emit greenhouse gases, pollutants and chemicals.

#### Socially Responsible

Solar energy supports the health of the environment and supports Canada's energy independence.

#### Money Saving

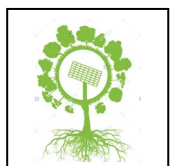
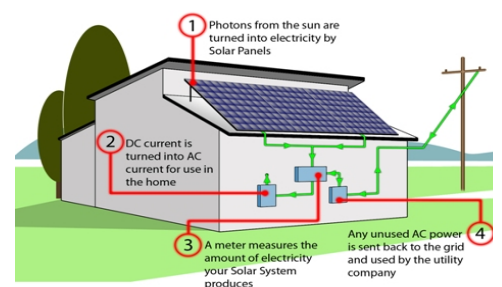
Solar panels generate the most power during peak demand when electricity is the most expensive.

#### Value

Solar panels add a increase to property value.

#### Protection

Solar panels protect and increase the life of a roof.





## Trades Solutions Developments

Designing and Building For All Nations

Cameron Andreas  
Trades Solutions Developments  
President & Owner  
306.737.0912  
tradessolutions.ca@gmail.com

### Quality is our Priority

We offer full services start to finish in every build; including basements, foundations, decks, garages, landscaping. Let us manage the details and entire project. We offer a full range of building options spanning 500 to 30,000 sq. ft.



### Client Consultation

We will meet with you to discuss budget, timelines, and home or structure location, style you're looking for.

The build characteristics and key details are agreed upon and approved contracts to begin the build process are signed.

- Baths
- Construction
- Exterior
- Interior
- Kitchen
- Utilities



### Build Warranty Coverage

All of our builds are covered by either the National New Home Warranty or our own guarantee that we will take care of any potential damages or malfunctions that happen to our build within the first year of completed build.

Get started making your vision a reality

Trades Solutions Developments



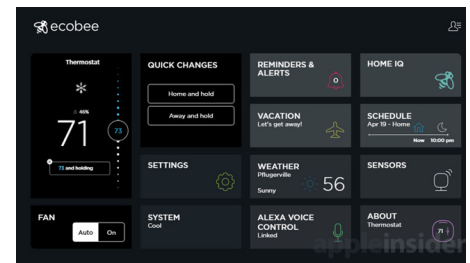
# Trades Solutions Developments

Designing and Building For All Nations

## Insulation System

### Insulation System

*With Consumers growing increasingly eco-conscious as looking to save more of their hard-earned money, eco-living and energy efficiency go hand in hand.*



Installing blow-in fiberglass in attics is a quick and eco-friendly way to help lower energy costs! Blow-in fiberglass is a good baseline improvement for existing structures that are in need of better insulation. It provides a basic protection from heat loss and or gain, and helps heating and cooling systems maintain a more comfortable environment.

- Gaps and cracks left by traditional insulation, which is common in most homes, allow air to pass through and if put together, all these openings could add up to the size of a basketball size hole.
- Air conditioning accounts for approximately 19% of all household electricity consumption and emits nearly 2 tons of carbon dioxide annually.
- Natural Resource of Canada says inefficient windows can account for up to 25% of total house air loss.
- Spray foam insulation both seals and insulates to help keep allergies and irritants at bay and eliminates air leakage to keep a steady temperature inside without the cooling and heating systems working overtime to compensate.
- Traditional insulation materials can allow moisture and fluctuations in temperature to pass through the home's envelope easily.

Selecting high efficiency building materials for the home is one of the easiest ways to optimize its overall performance. Spray foam insulation provides thermal insulation value as well as air-sealing, meaning air leakage is significantly reduced and your furnace and air conditioner can perform at optimum levels. This allows energy consumption reduction and more control of temperatures while lessening the environment impact. Additionally spray foam insulation reduces airborne moistures and pollutants from entering the home and eliminating seasonal allergies.



# Trades Solutions Developments

Designing and Building For All Nations

## Home Specifications



### Insulation

- \*R30 Walls with foam
- \*R50 Ceiling
- \* 6mil GSB poly and caulking
- \*windows and doors perimeter spray And blanket insulation

### Soffit

- \*Per-finished metal soffit and fascia

### Basement Stairs

- \*14 Riser straight run stair
- \* Handrail and stairwell walls

### Doors

- \*Hinged with inward and outward swing
- \* High density fibreboard 1-3/8 in. interior doors
- \*Fibreglass insulation 3'0" exterior door

### Drywall

- \* 1/2" Standard walls
- \* 1/2" CD board ceiling
- \* Aquaboard in bathroom
- \* Ceiling – snowtex textured ceiling
- \*Round corner bead

### Interior Walls

- \* 2x4 Construction grade spruce 16" o.c. double top plate, single bottom plate

### Trim

- \* 3 1/4" Painted casing
- \*4 1/4" Painted baseboards

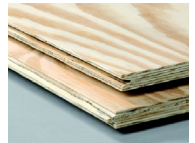


### Plumbing

- \*1 Piece bathtub/shower with surround
- \* Kohler toilet 1.28 GPF lined tank
- \*Kohler sink
- \*Double stainless steel kitchen sink
- \*1 piece shower with chrome glass door
- \*ventilation fans as per CAN/CSA – F326
- \*Kohler single lever Posi-temp bathroom chrome taps
- \*Kohler with spray wand kitchen taps
- \*Drains to floor joists and water line shut offs
- \* Septic tank

### Windows

- \* Vinyl siding with corners and accessories
- \* House wrap – Blue skin wrap around



### Closets

- \* Painted – closet shelves with one rod and hardware

### Exterior Walls

- \* 8" exterior wall height
- \* 2x6 Construction grade spruce
- \* 16" o.c. double top plate, single bottom plate
- \* 3/8" OSB sheath to bottom joist
- \* 2x10 Windows and door headers, inside ply is continuous

### Floor

- \*Engineered wood floor system
- \* Solid blocking
- \* 3/4" T & G OSB sheath glued and screwed
- \*Sanded plywood underlay – Linoleum and
- \* LVL around perimeter



### Designing and Building For All Nations

Cameron Andreas  
Trades Solutions Developments  
President & Owner  
306.737.0912  
tradessolutions.ca@gmail.com





# Trades Solutions Developments

Designing and Building For All Nations



## Roof

- \* Gable roof
- \* 4/12 Pitch
- \* Trusses at 24" o.c. 24" overhang
- \* 7/10 OSB sheathing with clips
- \* Lifetime IKO Cambridge fibreglass shingles
- \* Domed vents with metal flashing
- \* Continuous eavestroughs and downspouts

## Hardware

- \* Weiser door locks
- \* Chrome paper holders, towel bars and mirrors

## Floor Covering

- \* Armstrong & Tarkett vinyl kitchen and dining bathrooms
- \* Laminate 12mm in bathroom

## Electrical

- \* 100 amp Services
- \* Light fixtures as per needed
- \* Ductless range hood (stove)
- \* Decora switch and plugs
- \* Central vac, drops, telephone jacks, and cable rough-in (2)
- \* Plugs, switches and lights as per code
- \* Vent fans electrical rough-in conduit

## Painting

- \* 1 prime coat
- \* 2 finishing coats
- \* 1 Final coat
- \* Trim as required
- \* Delux paint 2 colors



Canadian  
Home Builders'  
Association



## Designing and Building For All Nations

Cameron Andreas  
Trades Solutions Developments  
President & Owner  
306.737.0912  
[tradessolutions.ca@gmail.com](mailto:tradessolutions.ca@gmail.com)



## Advantage Build System



Our way of building is a bit different from the competition. We have a more common sense thinking for finding ways to save you money and long term costs. Building with efficiency lengthens the life of your build. We look at features of your build to benefit you in every way. Through common sense building procedures it is something you never have to look back on.

### Some main points:

- \* Double exterior wall (cross bridge prevention)
- \* Green plant base insulation (no chemical)
- \* High Density foam insulation (mould prevention)
- \* R40 Wall system (energy efficient)
- \* R60 Attic blow insulation with organic natural wood or cotton (energy efficient)
- \* Inserted 6" windows and doors (wind shelter)
- \* 2" Ridge insulation around windows and doors (cross bridging prevention)
- \* Water proof floors throughout (better indolence in case of flood)
- \* LED Low voltage lighting wiring (energy efficient)
- \* Smart meter (energy efficient)
- \* Hot water on demand system (energy efficient)
- \* Heating unit that will save you 50% on the efficiency (energy efficient)
- \* Solar system capacity (renewable energy)
- \* Wind turbine capacity (renewable energy)



**COST  
EFFECTIVE**



**Designing and Building For All Nations**  
**Cameron Andreas**  
**Trades Solutions Developments**  
**President & Owner**  
**306.737.0912**  
**tradessolutions.ca@gmail.com**







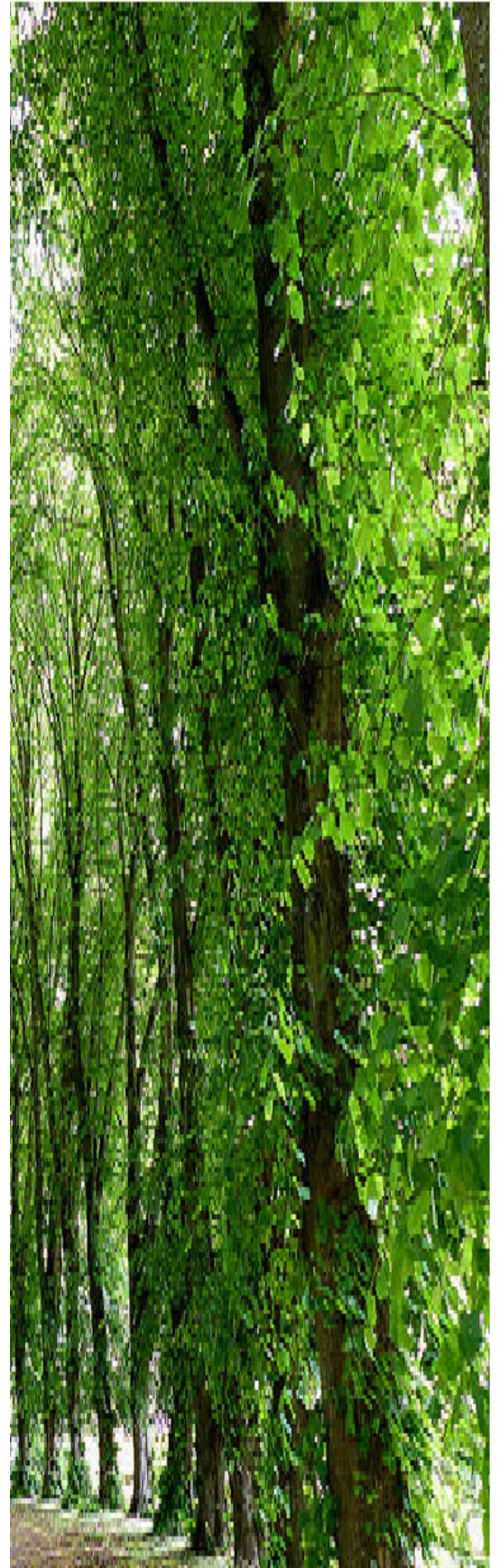
**Trades Solutions Developments**

**Designing and Building For All Nations**

# HOUSING DIVISION



Creating quality urban lifestyles, building  
stronger communities

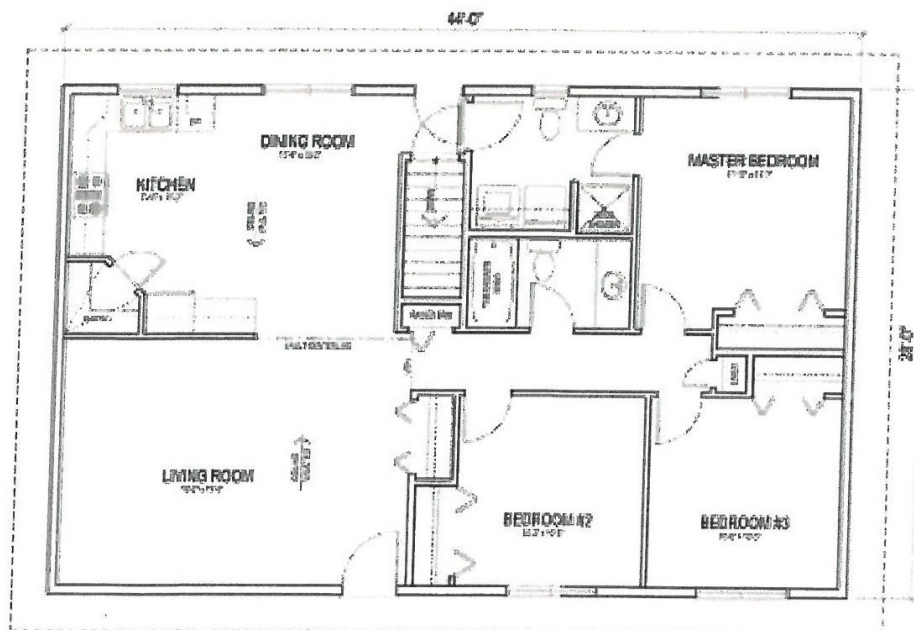




# Trades Solutions Developments

Designing and Building For All Nations

## The Dakota



### MAIN FLOOR PLAN

AREA 1232 SQ.FT.

3 Beds

2 Bath

- > Standard Items
- > R-26 Closed-cell spray foam insulation exterior walls
- > R-55 foam in Attic
- > In house custom made maple cabinet
- > Lifetime warranty on shingles
- > Interior wood trim White or Express
- > Granite counter top
- > Triple pane windows
- > Low flow faucets
- > Dual flush toilet



Canadian  
Home Builders'  
Association

M E M B E R



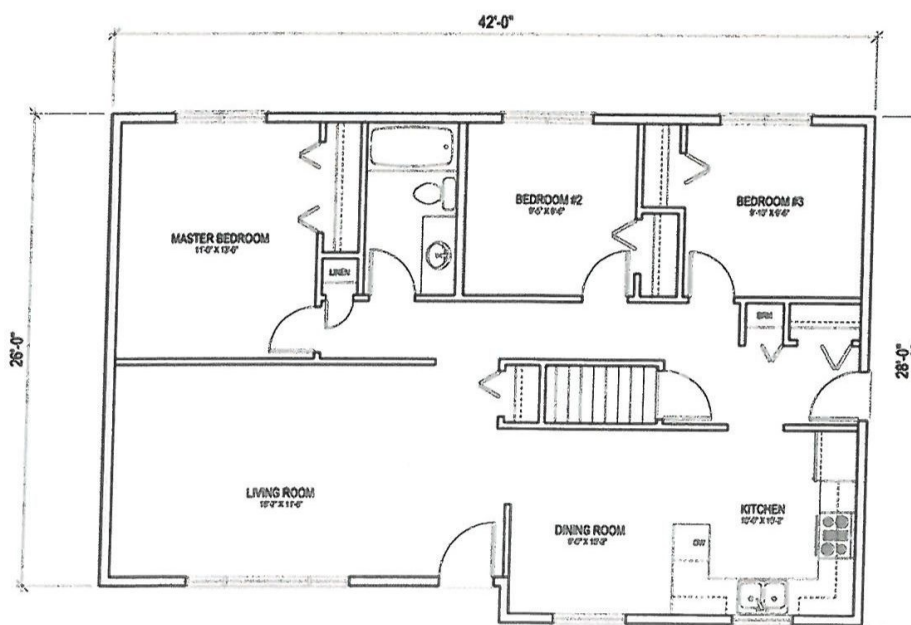




# Trades Solutions Developments

Designing and Building For All Nations

## The Battleford



**MAIN FLOOR PLAN**  
AREA 1134 SQ.FT.  
3 Beds  
1 Bath

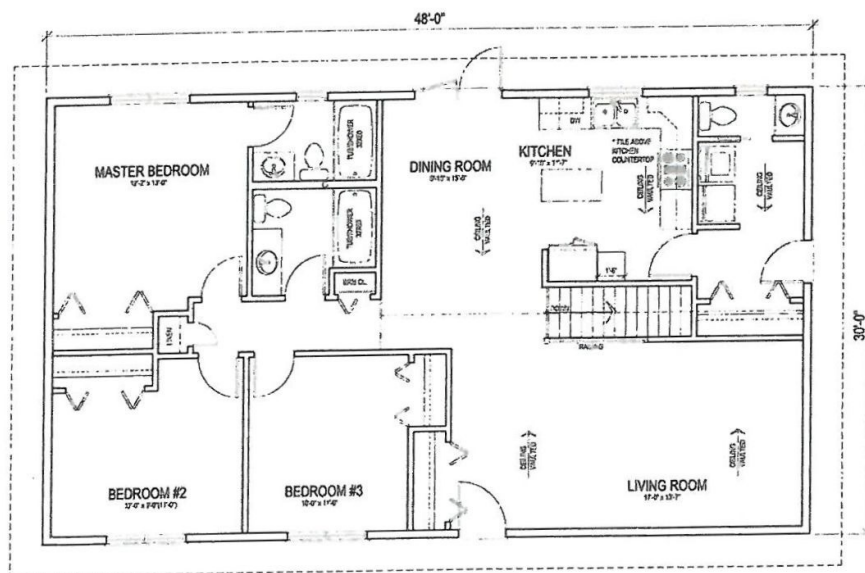
- > Standard Items
- > R-26 Closed-cell spray foam insulation exterior walls
- > R-55 foam in Attic
- > In house custom made maple cabinet
- > Lifetime warranty on shingles
- > Interior wood trim White or Express
- > Granite counter top
- > Triple pane windows
- > Low flow faucets
- > Dual flush toilet



# Trades Solutions Developments

Designing and Building For All Nations

## The Bellevue



MAIN FLOOR PLAN  
AREA 1374 SQ.FT.

- > Standard Items
- > R-26 Closed-cell spray foam insulation exterior walls
- > R-55 foam in Attic
- > In house custom made maple cabinet
- > Lifetime warranty on shingles
- > Interior wood trim White or Express
- > Granite counter top
- > Triple pane windows
- > Low flow faucets
- > Dual flush toilet



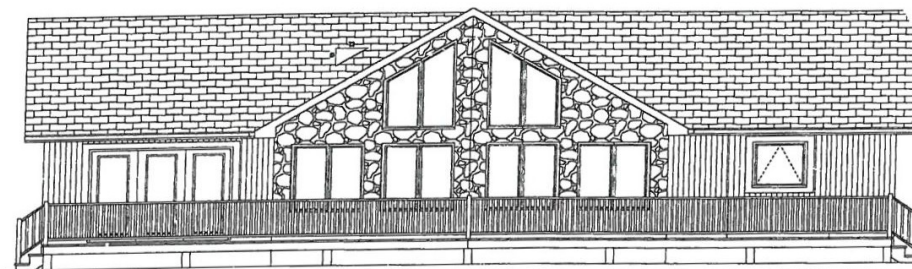




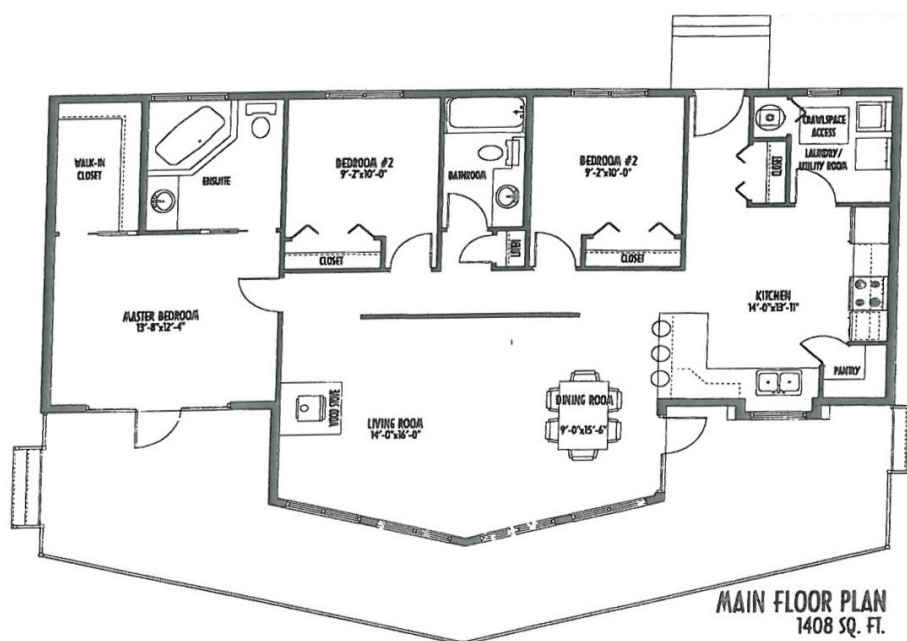
# Trades Solutions Developments

Designing and Building For All Nations

## The Cabri



FRONT ELEVATION



MAIN FLOOR PLAN  
1408 SQ. FT.

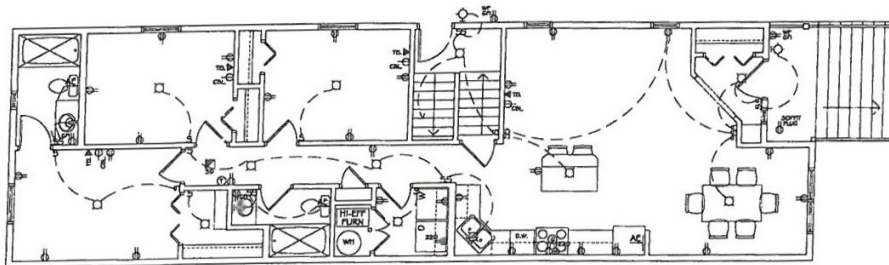
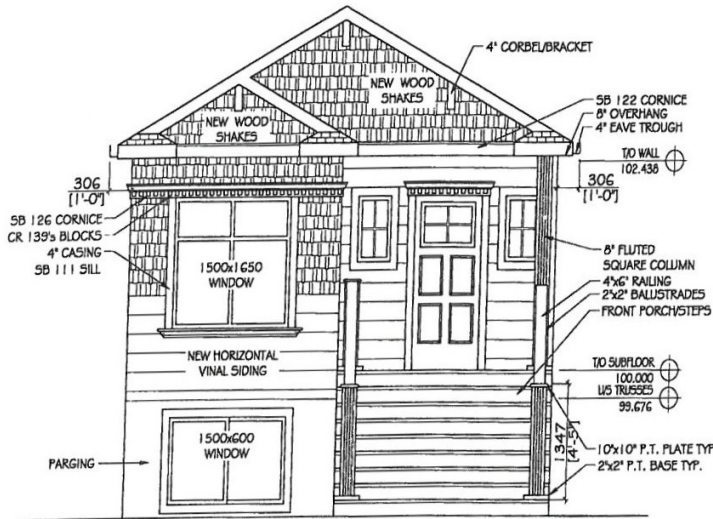
- >> Standard Items
- >> R-26 Closed-cell spray foam insulation exterior walls
- >> R-55 foam in Attic
- >> In house custom made maple cabinet
- >> Lifetime warranty on shingles
- >> Interior wood trim White or Express
- >> Granite counter top
- >> Triple pane windows
- >> Low flow faucets
- >> Dual flush toilet



# Trades Solutions Developments

Designing and Building For All Nations

## The Wilcox



MAIN FLOOR ELECTRICAL PLAN  
SCALE 1 : 50

64'

MAIN FLOOR PLAN  
AREA 1200 SQ.FT.  
3 Beds  
2 Bath

- >> Standard Items
- >> R-26 Closed-cell spray foam insulation exterior walls
- >> R-55 foam in Attic
- >> In house custom made maple cabinet
- >> Lifetime warranty on shingles
- >> Interior wood trim White or Express
- >> Granite counter top
- >> Triple pane windows
- >> Low flow faucets
- >> Dual flush toilet





# Trades Solutions Developments

Designing and Building For All Nations



## MODERN CONSTRUCTIONS



UNDER  
CONSTRUCTION





# Trades Solutions Developments

Designing and Building For All Nations

## 2 Story Triplex



1000 Sq. Ft. Living Space  
3 Bedrooms  
2 Bathrooms  
Balcony  
Basement



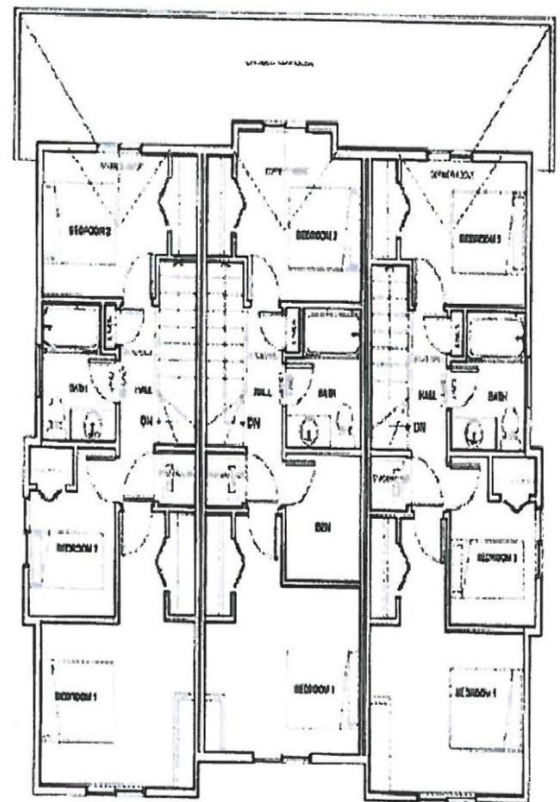
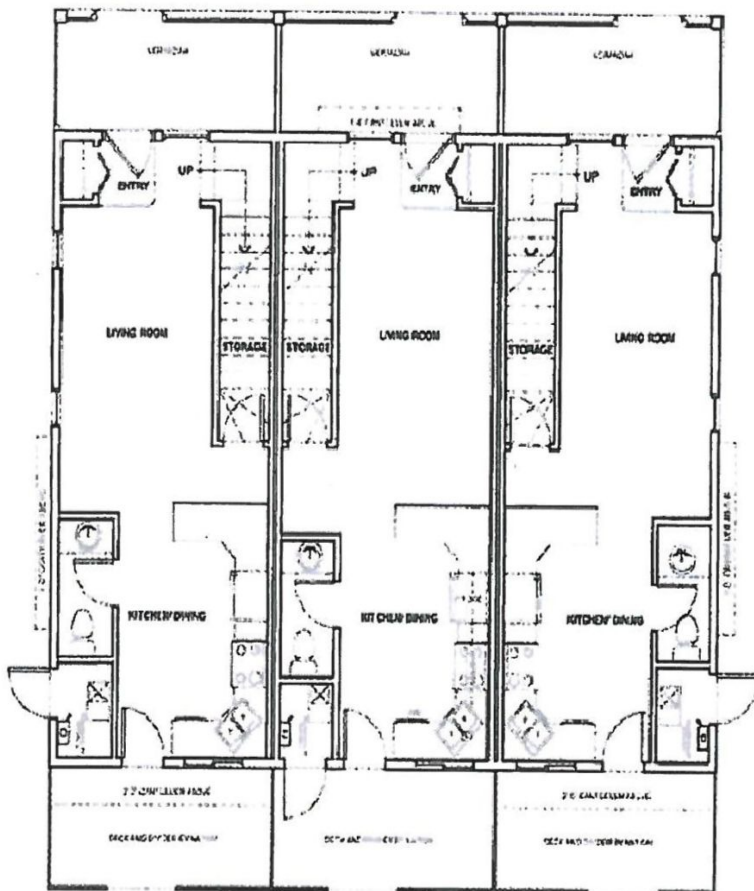




# Trades Solutions Developments

Designing and Building For All Nations

## 2 Story Triplex Floor plan





# Trades Solutions Developments

Designing and Building For All Nations

## 2 Storey Fourplex



1160 Sq. Ft. Living Space

3 Bedrooms

2 Bathrooms

Basement

Separate Entrance

Separate Balcony





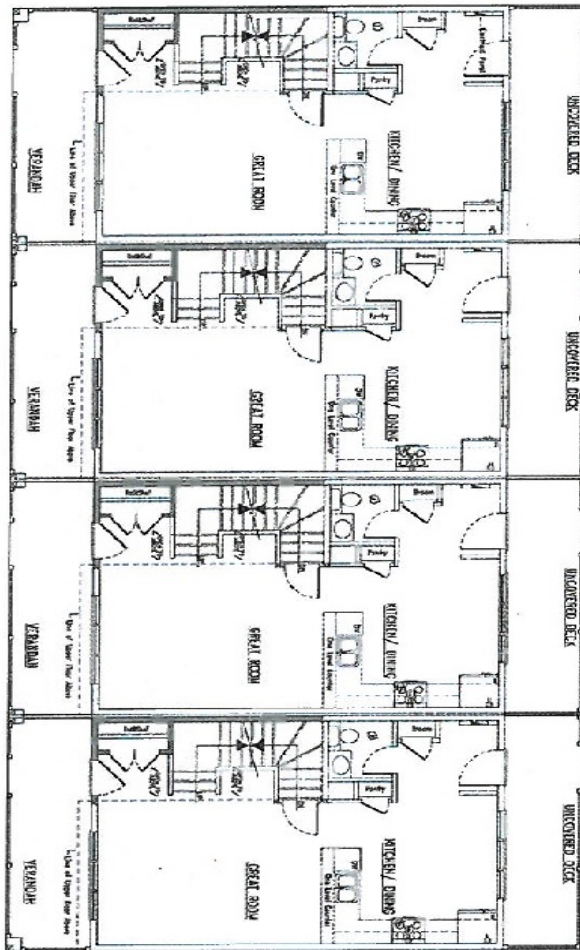


# Trades Solutions Developments

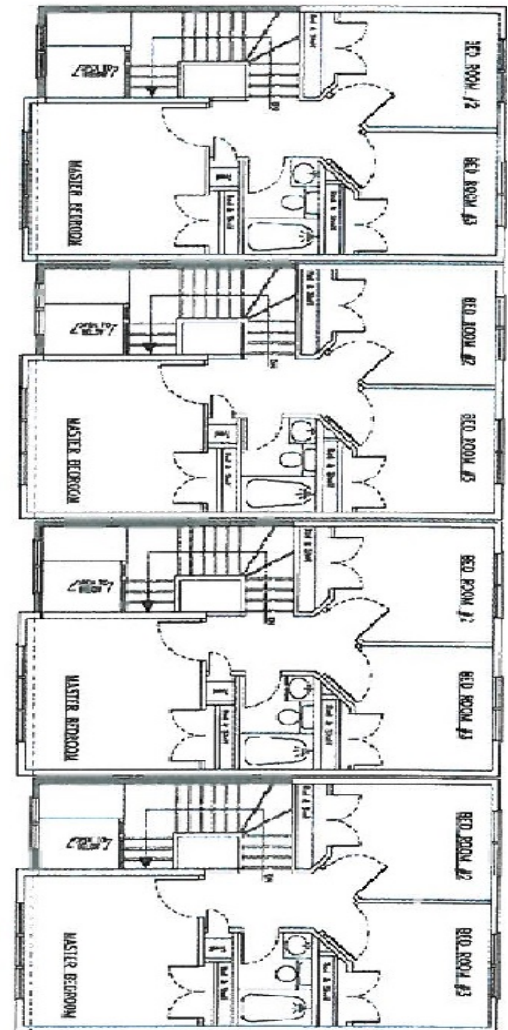
Designing and Building For All Nations

## 2 Storey Fourplex Floor Plan

### Main Floor



### Upper Floor





# Trades Solutions Developments

Designing and Building For All Nations

## 2 Storey Duplex



1000 Sq. Ft. Living Space

3 Bedrooms

2 Bathrooms

Basement





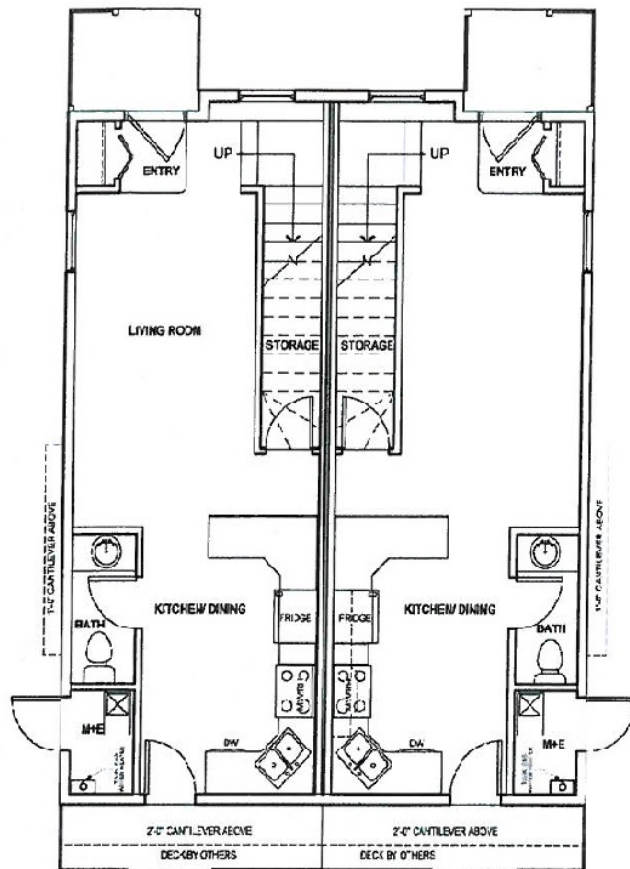


# Trades Solutions Developments

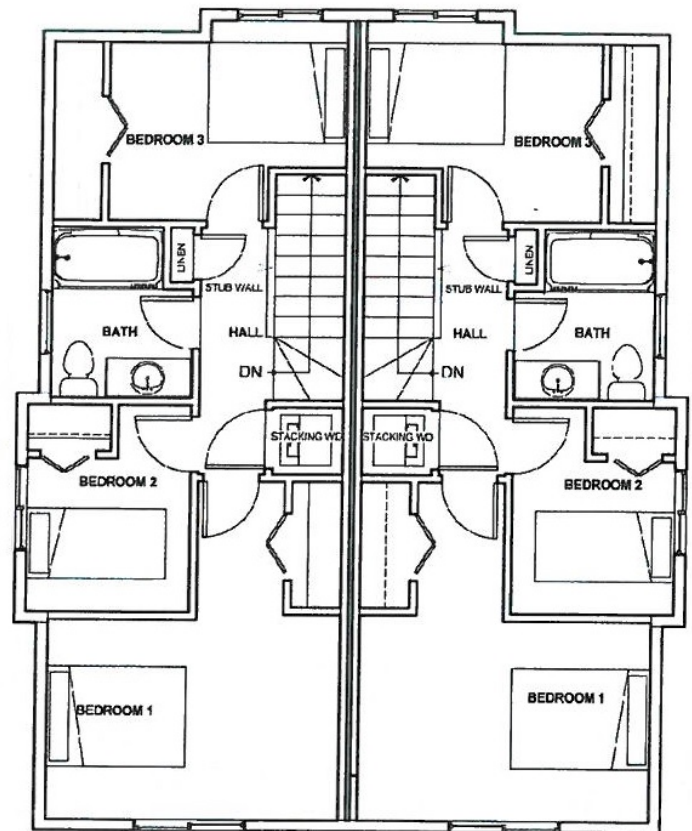
Designing and Building For All Nations

## 2 Storey Duplex Floor Plan

### Main Floor



### Upper Floor





# Trades Solutions Developments

Designing and Building For All Nations

## 12 Unit Apartments



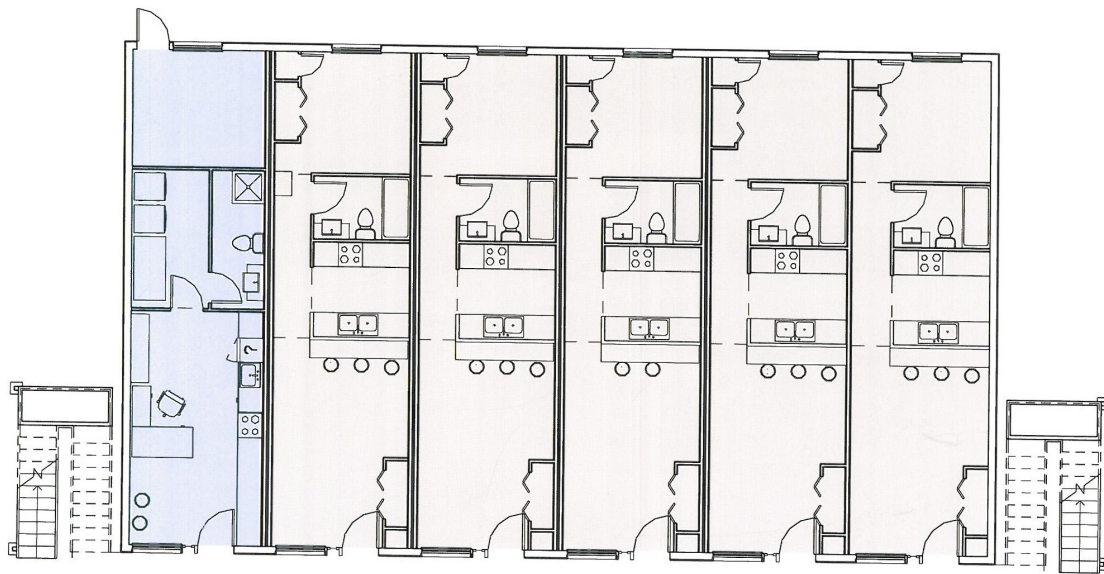




# Trades Solutions Developments

Designing and Building For All Nations

## 12 Unit Apartments Floor Plan





# Trades Solutions Developments

Designing and Building For All Nations

## Multi-Family Housing



**Multi-Family 3 Storey Housing  
Solution Featuring Culturally  
Reflective Gathering Area  
Main Floor 10 Suites**





# Trades Solutions Developments

Designing and Building For All Nations

## Multi-Family Housing Floor Plan

### Main Floor







# Trades Solutions Developments

Designing and Building For All Nations

Elementary School / Junior High

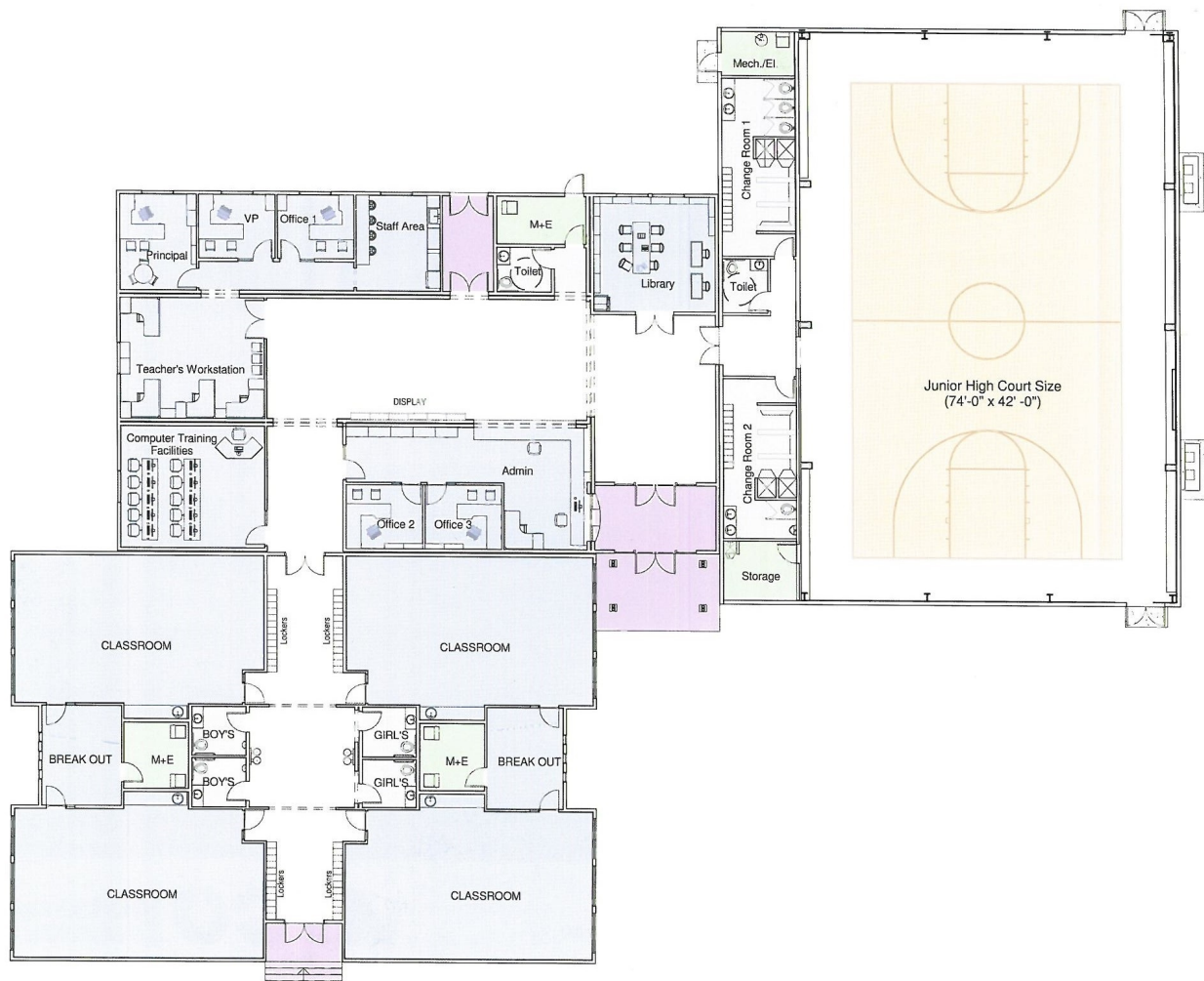




# Trades Solutions Developments

Designing and Building For All Nations

## Elementary School / Junior High Floor Plan







# Trades Solutions Developments

Designing and Building For All Nations

Junior / Senior High School



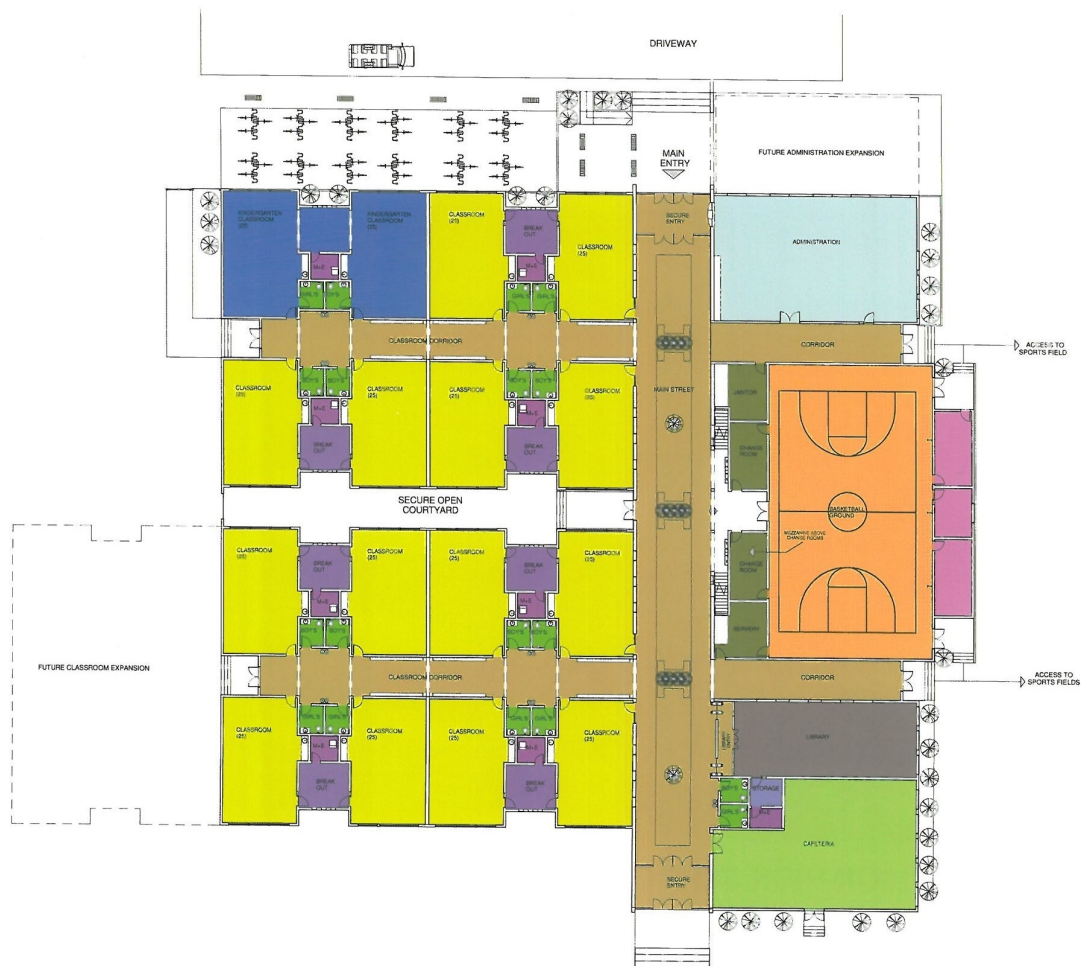




# Trades Solutions Developments

Designing and Building For All Nations

## Junior / Senior High School Floor Plan





# Trades Solutions Developments

Designing and Building For All Nations

## Community Center with Gymnasium







# Trades Solutions Developments

Designing and Building For All Nations

## Culture Centre / Multi-Program Building







# Trades Solutions Developments

Designing and Building For All Nations

## Culture Centre / Multi-Program Building Floor Plan

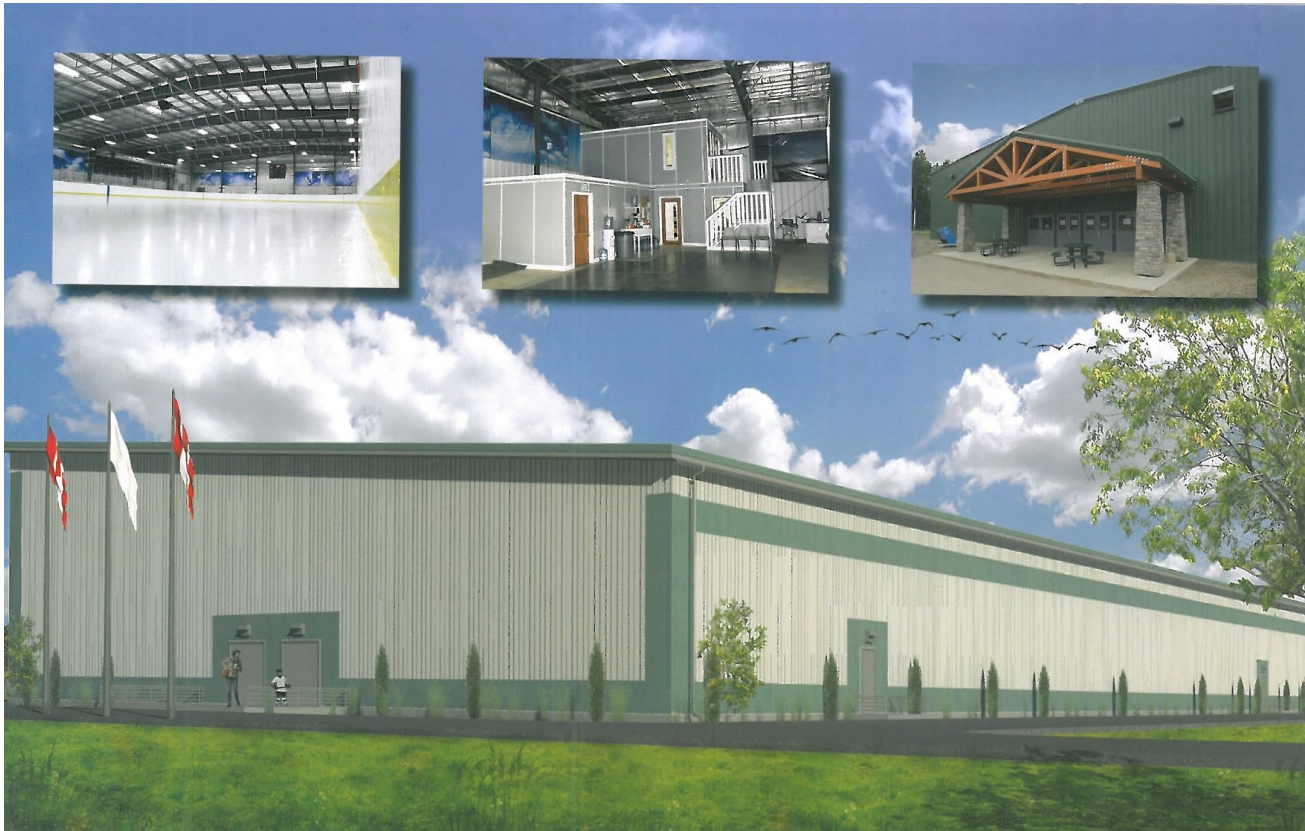




# Trades Solutions Developments

Designing and Building For All Nations

Hockey / Ringette / Skate Arena

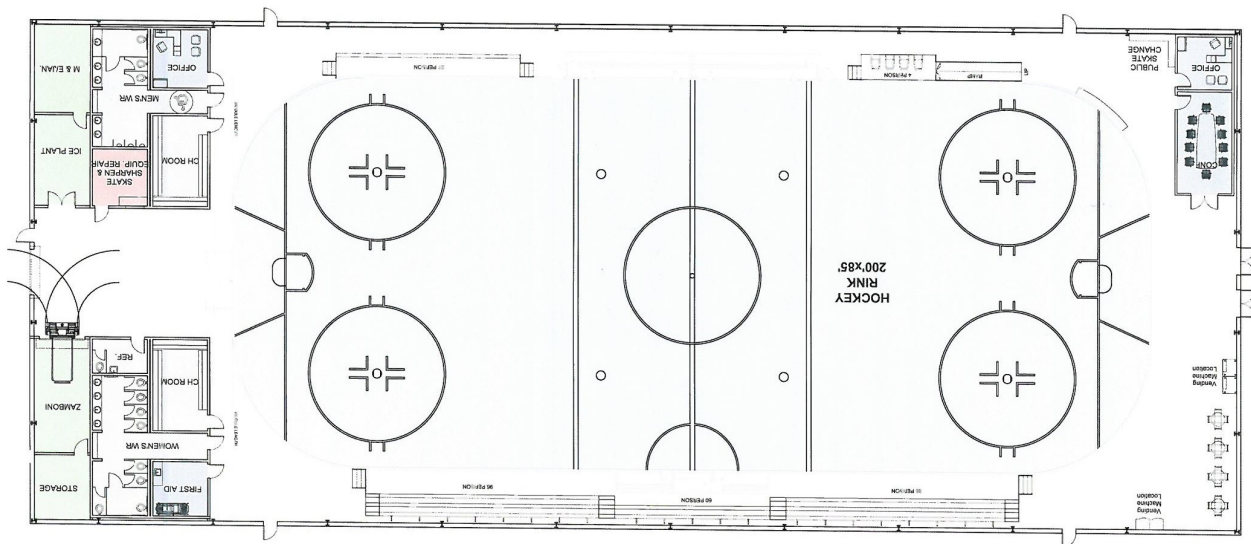




# Trades Solutions Developments

Designing and Building For All Nations

## Hockey / Ringette / Skate Arena Floor Plan







# Trades Solutions Developments

Designing and Building For All Nations

## Grocery Store

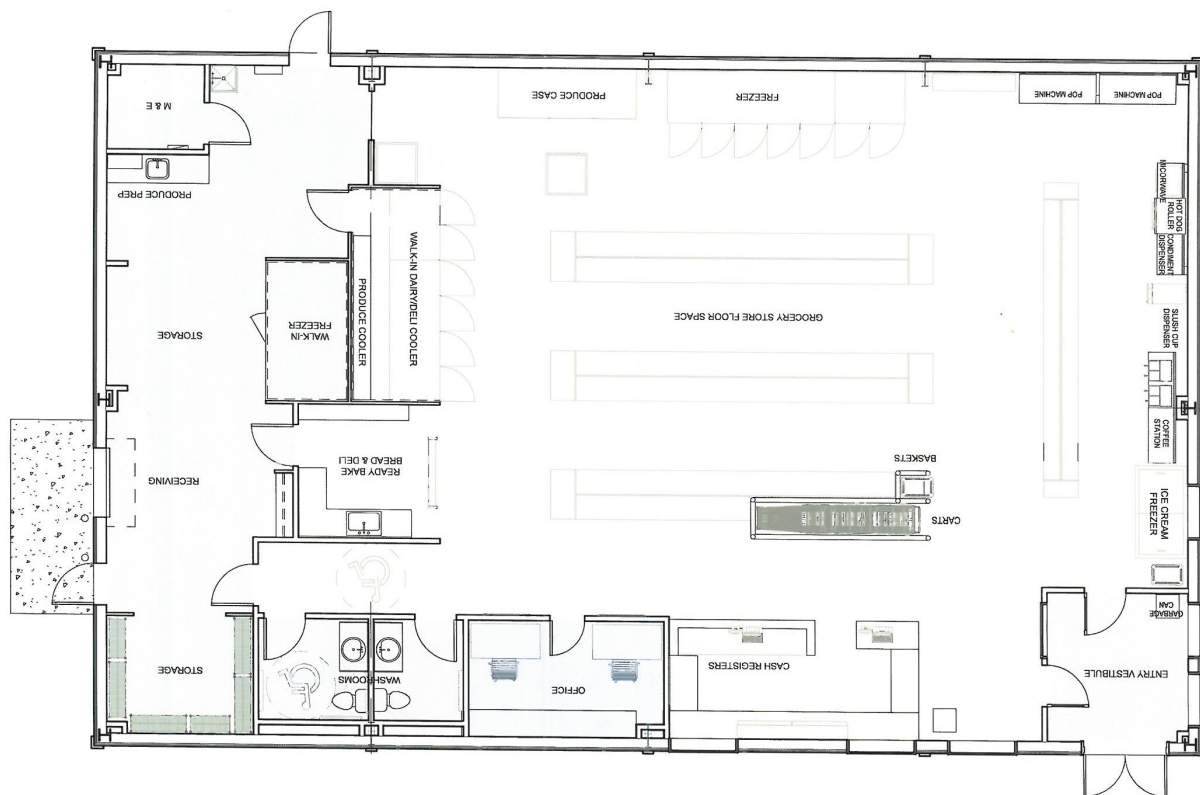




# Trades Solutions Developments

Designing and Building For All Nations

## Grocery Store Floor Plan







# Trades Solutions Developments

Designing and Building For All Nations

## Convenience Store / Gas Station



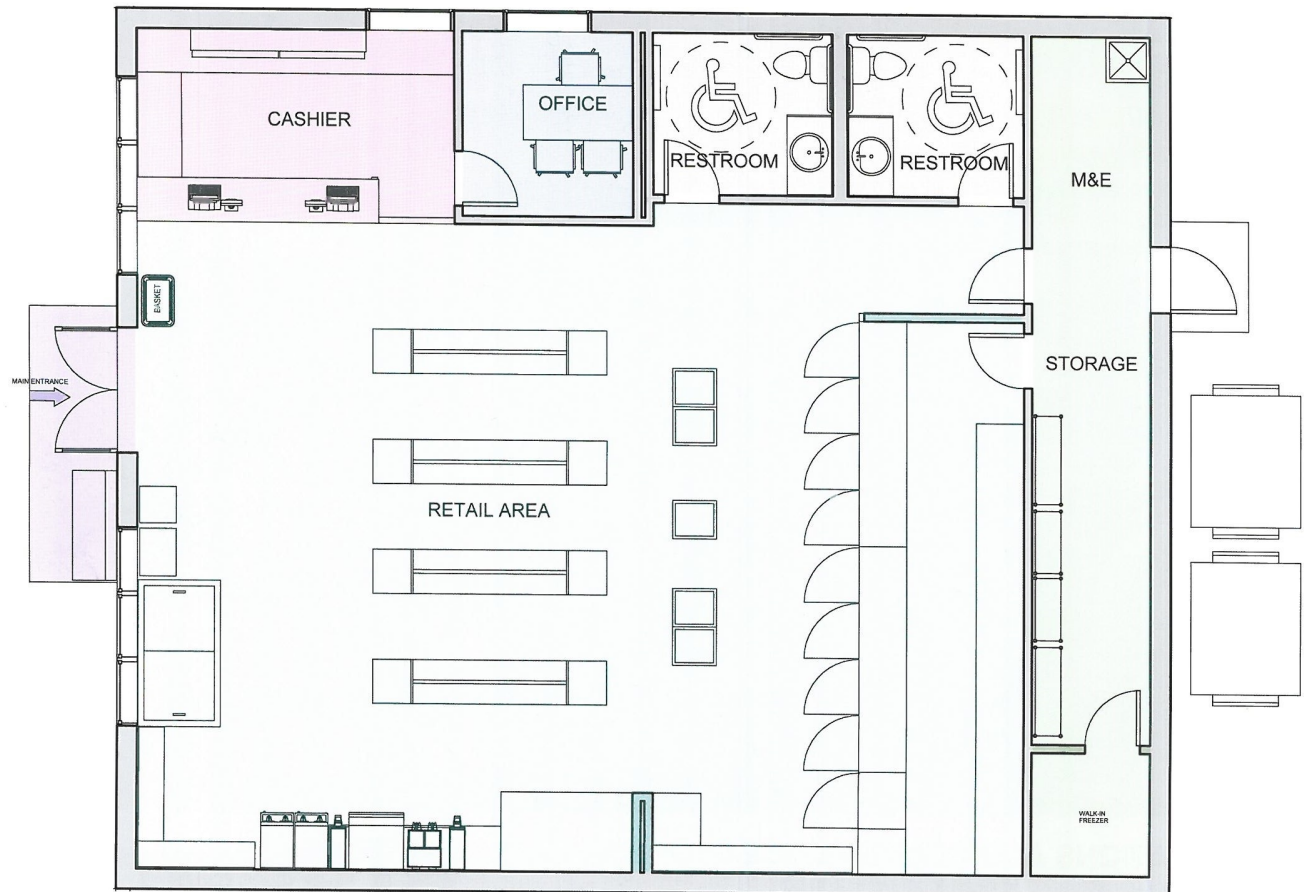




# Trades Solutions Developments

Designing and Building For All Nations

## Convenience Store / Gas Station Floor Plan





# Trades Solutions Developments

Designing and Building For All Nations

## Motel and Conference Centre





# Trades Solutions Developments

Designing and Building For All Nations

## Motel and Conference Centre Floor Plan







# Trades Solutions Developments

Designing and Building For All Nations

## Office and Maintenance Building

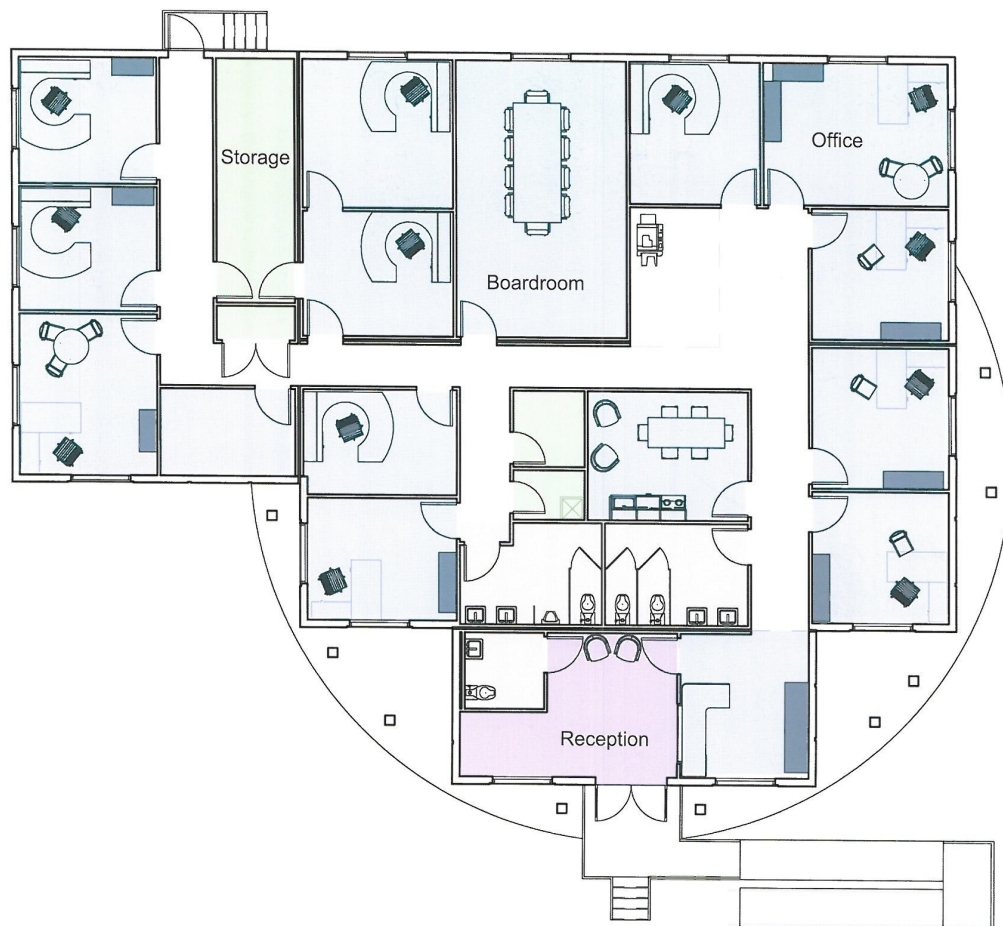




# Trades Solutions Developments

Designing and Building For All Nations

## Office and Maintenance Building Floor Plan







# Trades Solutions Developments

Designing and Building For All Nations

## Office and Maintenance Building



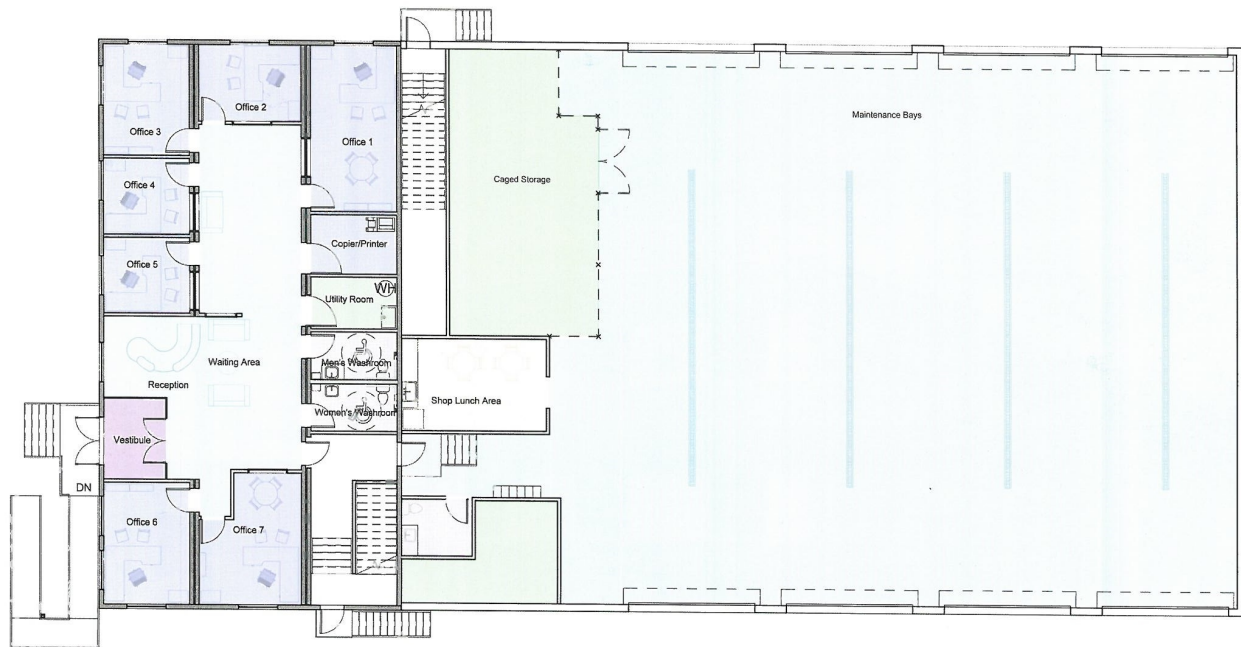




# Trades Solutions Developments

Designing and Building For All Nations

## Office and Maintenance Building Floor Plan





# Trades Solutions Developments

Designing and Building For All Nations

## Fire Station

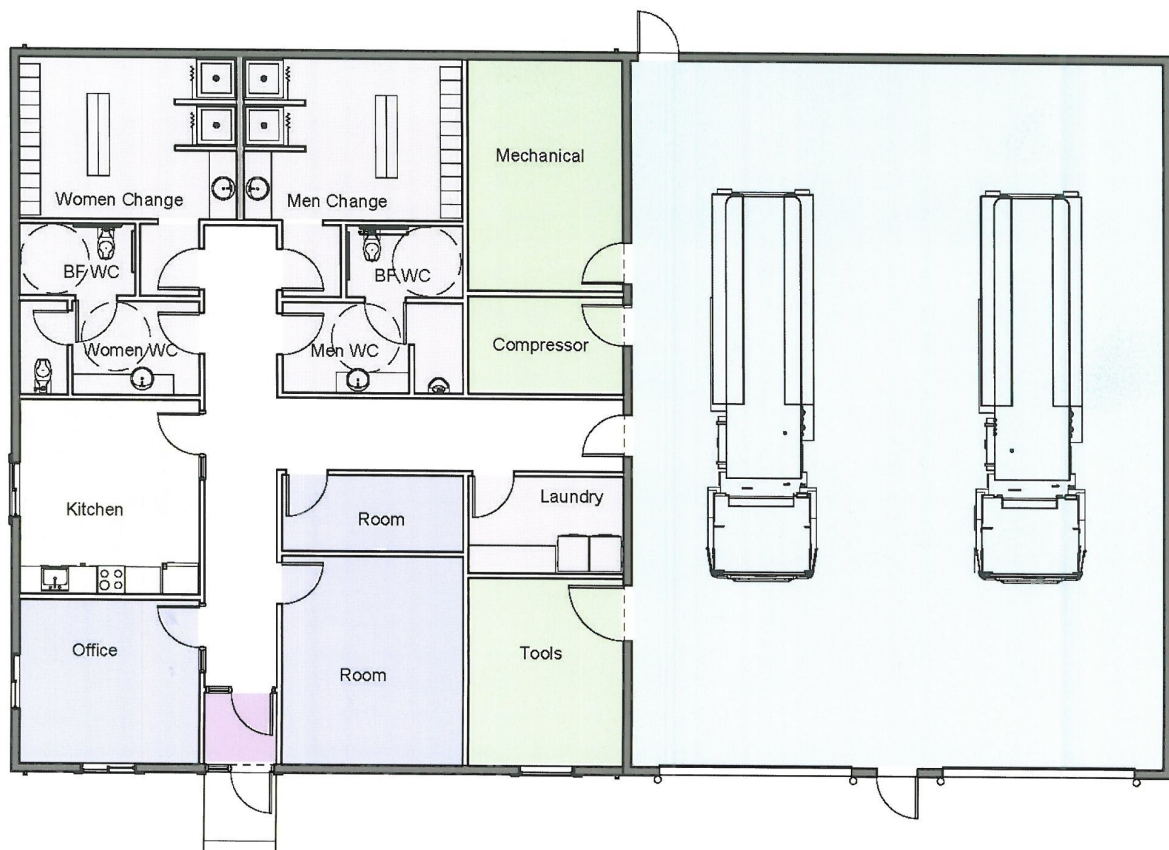




# Trades Solutions Developments

Designing and Building For All Nations

## Fire Station Floor Plan







# Trades Solutions Developments

Designing and Building For All Nations



## COMPLETED BUILDS





# Trades Solutions Developments

## Designing and Building For All Nations

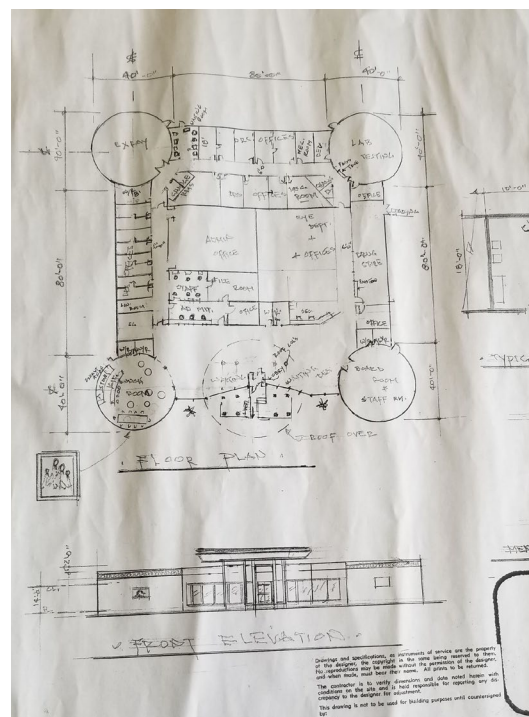
### Blue Prints Drawings



### Blue Prints Concepts



### Engineered Blue Prints



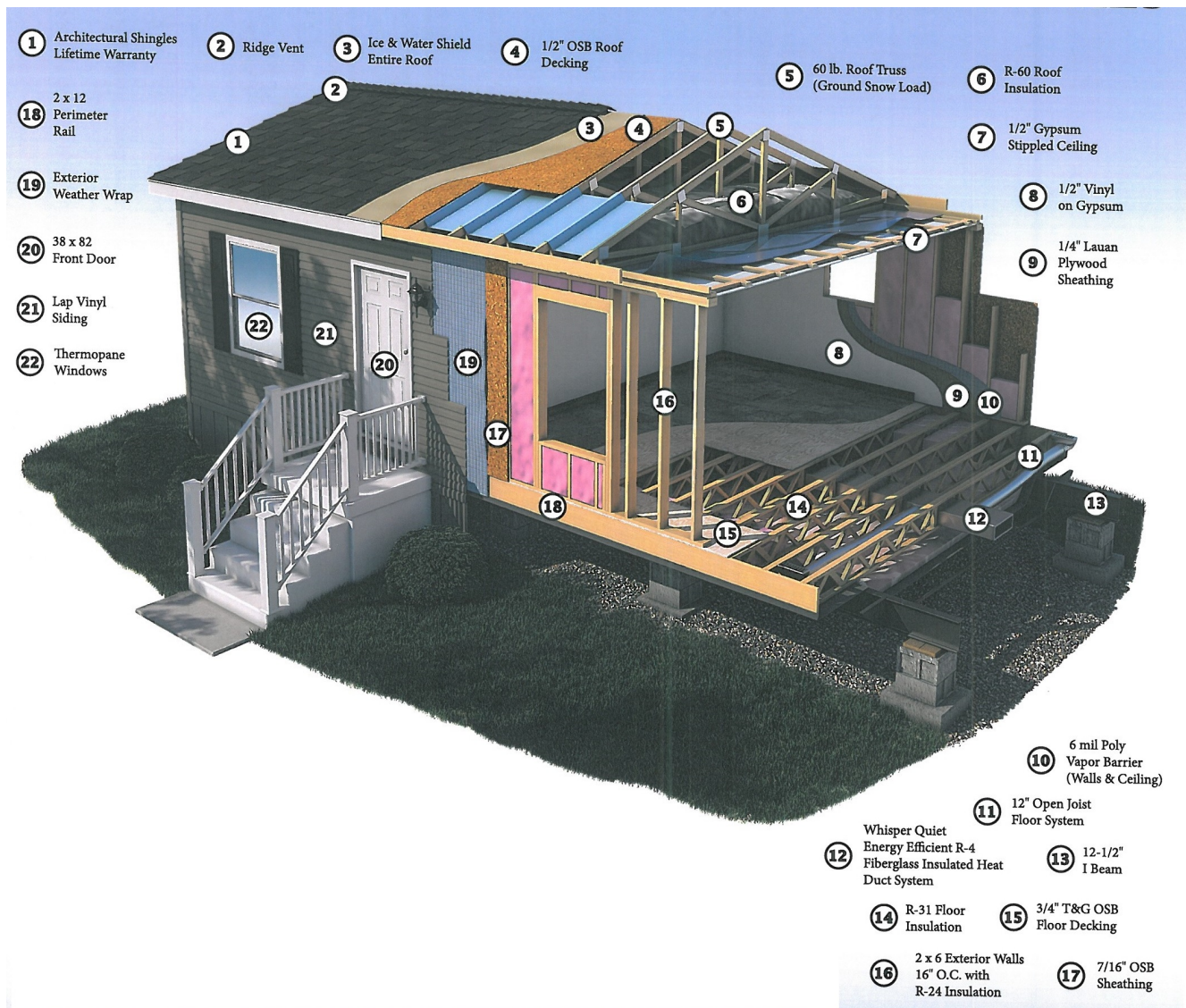




# Trades Solutions Developments

Designing and Building For All Nations

## Build Cutaway







# Trades Solutions Developments

**Designing and Building For All Nations**

## **Build Cutaway Features and Benefits**

1. Shingles with lifetime warranty – We choose quality lifetime shingles that stand the test of time for protection.
2. Roof Ridge Vent for Proper Attic Circulation – We equip the roof with a ridge vent to prevent moisture problems to roof trusses, shingles, insulation and walls.
3. Protective Ice and Water Shield on Entire Roof – We apply a full coverage ice and water shield overlay to roof decking to protect the roof.
4. Quality 1/2" OSB Roof Decking – We add strength to your roof with 1/2" OSB roof decking for a solid covering on the home.
5. Heavy Duty 60lb. Ground Snow Load Roof Truss.
6. High Protection – We use R-60 roof insulation for comfort in all seasons.
7. 1/2" Sealed Ceiling – Undercoat and top coat.
8. 1/2" Vinyl Gypsum Wall Panel – 1/2" Vinyl on gypsum to add structural integrity and reduce room to room noise.
9. 1/4" Plywood Wall Sheathing – 1/4" Lauan plywood wall sheathing between our 1/2" vinyl on gypsum and our 2x6 exterior walls.
10. Energy-efficient 6mil Poly Vapor Barrier- 6mil poly vapor barrier to control room temperatures and prevent musty odors.
11. Open Floor Joist System – Entire home is strengthened with 12" open floor joist system built 16" on center.
12. Whisper Quiet R-4 Fibreglass Insulated Heat Duct System.
13. 12-1/2" I Beam Frame – Heavy-duty reinforced 12 – 1/2" I beam in place for superior infrastructure.
14. R-31 Floor – A thick blanket of R-31 insulation in all floors for heating and cooling.
15. 3/4" Tongue and Groove OSB Floor Decking – To maintain floor level consistency and prevent floor creaking.
16. 2x6 Solid Exterior Walls, 16" O.C. with R24 Insulation – We space our walls studs 16" on center.
17. 7/16" OSB Wall sheathing – Add structural integrity, reduce noise and add R insulation.
18. 2x12 Perimeter Rail- Residential stile 2x12 perimeter rail provides added floor strength a creaky floor noise.
19. High Efficient Weather Wrap – Adding a weather resistant barrier prevents water leaks into walls and allows vapor to pass from the walls to the exterior.
20. Residential 38x82 Front Door – A 38x82 heavy-duty storm door for security and protection.
21. Vinyl Lap Siding – Completed exterior walls with low maintained, vinyl lap siding for aesthetic value and home value.
22. Top-Rate Thermo pane Windows – Top-rated windows triple pane Pella 250 series windows.





# Trades Solutions Developments

Designing and Building For All Nations

## Comfortable Living



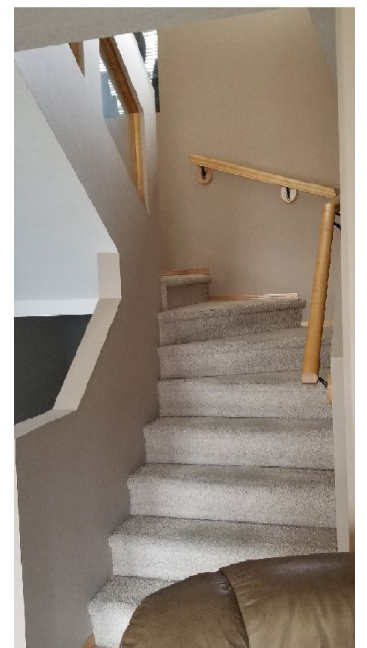
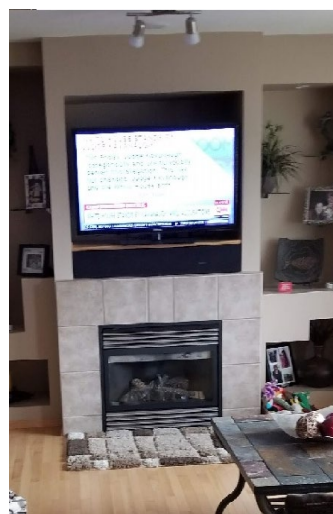
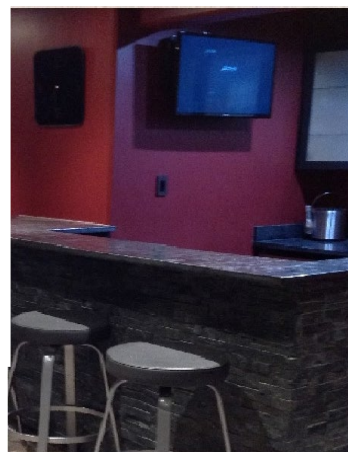
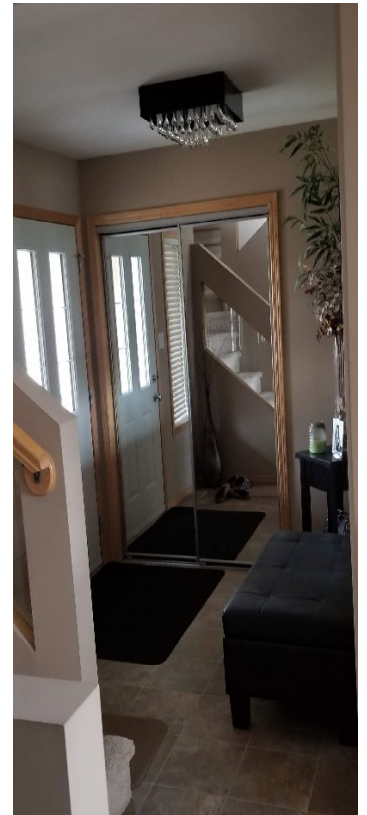




# Trades Solutions Developments

Designing and Building For All Nations

## Residential







# Trades Solutions Developments

Designing and Building For All Nations

Clinic Office





# Trades Solutions Developments

Designing and Building For All Nations

## Franchise Restaurant



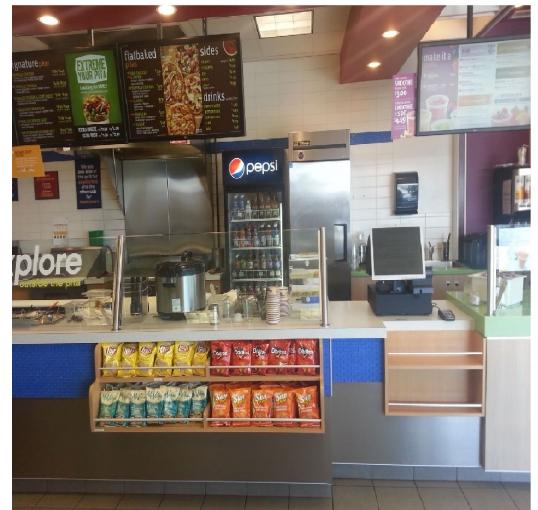




# Trades Solutions Developments

Designing and Building For All Nations

## Franchise Extreme Pita







# Trades Solutions Developments

Designing and Building For All Nations

## Franchise Mr. Lube





# Trades Solutions Developments

Designing and Building For All Nations

## Motel and Suites







# Trades Solutions Developments

Designing and Building For All Nations

## Family Housing







**Trades Solutions Developments**

**Designing and Building For All Nations**

## DETAIL & DESIGN SPECIFICATIONS





# Trades Solutions Developments

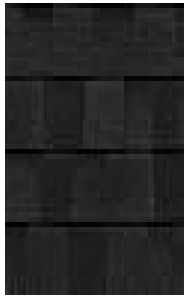
Designing and Building For All Nations



## ROOF SHINGLES



TruDefinition Series Shingles with SureNail Technology  
Limited lifetime warranty with ten year TruPROtection Coverage.



Onyx Black



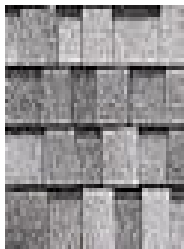
Estate Grey



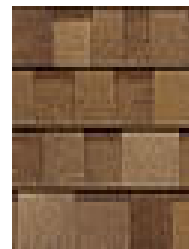
Drift Wood



Harbour Blue



Serra Grey



Dessert Tan



Brown Wood



Teak



## WINDOW SHUTTERS

Composite PVC Exterior Shutters (non-rot Shutters)



**White**

**Black**



**Brown**



**Sandstone**



**Green**



**Berry**



**Pine**



**Royal**





**Trades Solutions Developments**

**Designing and Building For All Nations**

## EXTERIOR TRIM SIDING



Standard



**Brownstone**



**Wicker**



**Heather**



**Sand**



**Harvard Slate**



**Flagstone**



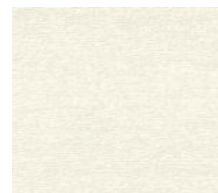
**Clay**



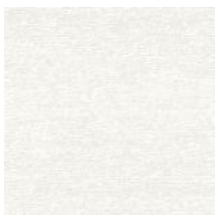
**Estate Grey**



**Vintage Cream**



**Linen**



**White**



**Blue Grey**



**Pebble Clay**



**Cypress**

(Premium UV Resistant)



# Trades Solutions Developments

Designing and Building For All Nations

## EXTERIOR DOORS



**38x82 Decorators**



**34x82 Fire Rated**



**38x82 Etched Glass  
Round Top**



**34x82 9 Lite  
38x82 9 Lite**



**75.5x82 Swing Patio**



**72x80 Glass Patio  
w/o Grids**

**Door sizes are all rough opening sizes.**

**Available in white only**

**Storm doors are standard on all doors  
except the fire rated doors.**





# Trades Solutions Developments

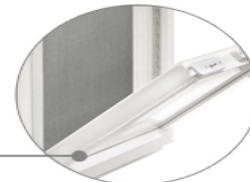
Designing and Building For All Nations

## WINDOWS



### Easy Clean, Single Hung

High strength, heavy duty, multi-webbed frame welded construction. Attractive exterior frame and beveled glazing bead, sweep lock with sash stop with weather stripping, standard easy to open. Hidden pivot shoe pocket –hidden, constant force, high tension reinforced lock/keeper rail and removable spring-loaded screen.



Bottom sash can be removed for easy cleaning.

Sash



Two spring-loaded thumb latches for operation of removable lower sash.

Latches



Integral "J" trim eliminates the need for additional exterior frame accessories and covers the raw edge of the siding for a clean appearance.

Lap pocket



Marine glazed fixed panel and sash for superior weatherproofing.

Glazed panel



Canadian  
Home Builders'  
Association

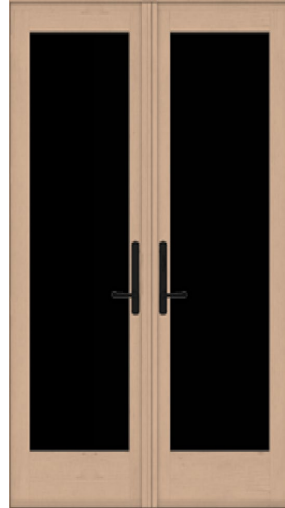
M E M B E R



## Interior Doors



**2 Panel Archtop**



**Double French door**



**Hardwood Barn door**



**4 Panel raised**



**6 Panel Smooth**



**2 panel raised double doors**



**Pantry Door with raised**

**All Doors Available in White, Milan and Vintage Colors**



# Trades Solutions Developments

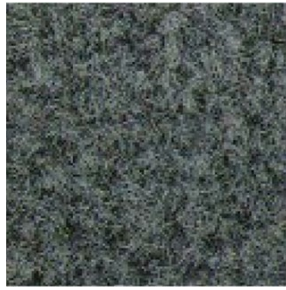
Designing and Building For All Nations

## Flooring

### Mantra Carpet



Wood Smoke 18oz



Marble Grey 18oz



Russet 18oz



Baled Hay 18oz

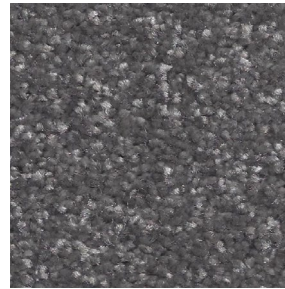
### Macramé Carpet



Sand Dollar 25oz



Mushroom Cap 25oz



Cloudburst 25oz



Truffle 25oz



Heavy Traffic Carpet Pebble 28oz







# Trades Solutions Developments

Designing and Building For All Nations

## Seamless Vinyl Floor



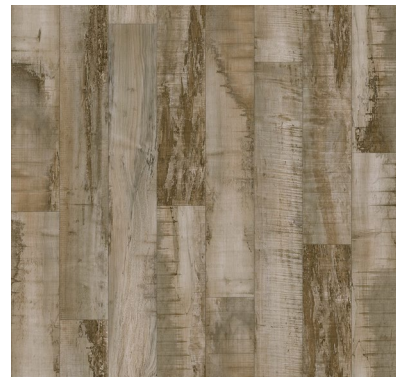
**Pamplona**



**Valley Oak**



**Baltimore**



**Sugar Maple**



# Trades Solutions Developments

Designing and Building For All Nations

## CABINETS

Quality hardwood cabinets that are built in our cabinet shop Hardwood Cabinet Doors with hidden hinges, hardwood stiles and dove tail drawers. Hickory only available in raised panel.



Stonehead



Vintage Maple



Rustic Shore



Milan Maple



Cottage Slate



Hickory







# Trades Solutions Developments

Designing and Building For All Nations



30" Cabinets with overhead cubbies  
And Ornamental Spacing





## CABINETRY

### Laundry Cabinets



- \* Provides spacious storage options
  - \*Brings a stylish look
- Comes with roll out storage trays and plenty of storage space

### Sink Cabinet Options



44" deep Sink



58" deep Sink



# Trades Solutions Developments

Designing and Building For All Nations

## More Cabinet Options



48" deep Sink



32" deep Sink



Free Standing Credenza



Wall Mounted Credenza





# Trades Solutions Developments

Designing and Building For All Nations

## Large Cabinet Options



98" Floating Entertainment Center



74x20" Desk



Linen Cabinet



Master Bedroom Linen Closet



## Entertainment Cabinets



**56" Floating Entertainment Cabinet**



**173" Entertainment Cabinet with Fire Place**



**78" Entertainment Cabinet**



**78" Entertainment Cabinet**



**108" Entertainment Cabinet**



**162" Entertainment Cabinet**



**152" Entertainment Cabinet**



# Trades Solutions Developments

Designing and Building For All Nations

## Island Cabinets







# Trades Solutions Developments

Designing and Building For All Nations

## Kitchen Cabinets



### Wall Oven



Microwave Pantry



Pantry with pull-out Shelf



Brushed Nickel Handles



Bronze Handles





# Trades Solutions Developments

Designing and Building For All Nations

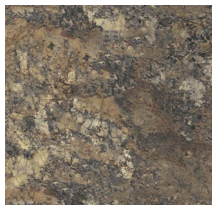
## Counter Tops



### Standard Counter Tops



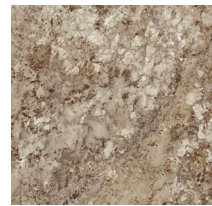
**Bernard Granite**



**Winter Carnival**



**Spring Carnival**



**Autumn Carnival**



**Angel Ash**



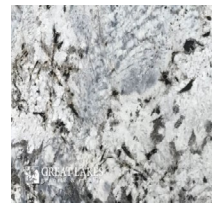
**Antique Mascarello**



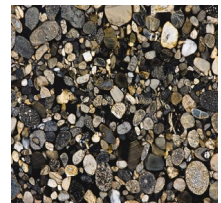
**African Rainbow**



**Blue Flower**



**Alaska White**



**Marinace Black**



## Counter Top Edges



## Counter Top Upgrades



## Kitchen Sinks



**Farmer Single**

Sink sizes 33"x 22"x 9"  
deep, Stainless Steel



**Farmer Double**



**KOHLER**

## Faucets



**Bronze/Steel Pull Down**



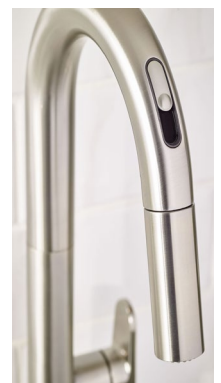
**Deck Mount**



**Pull Down Handle  
with Spray**



**MOEN**  
Buy it for looks. Buy it for life.®



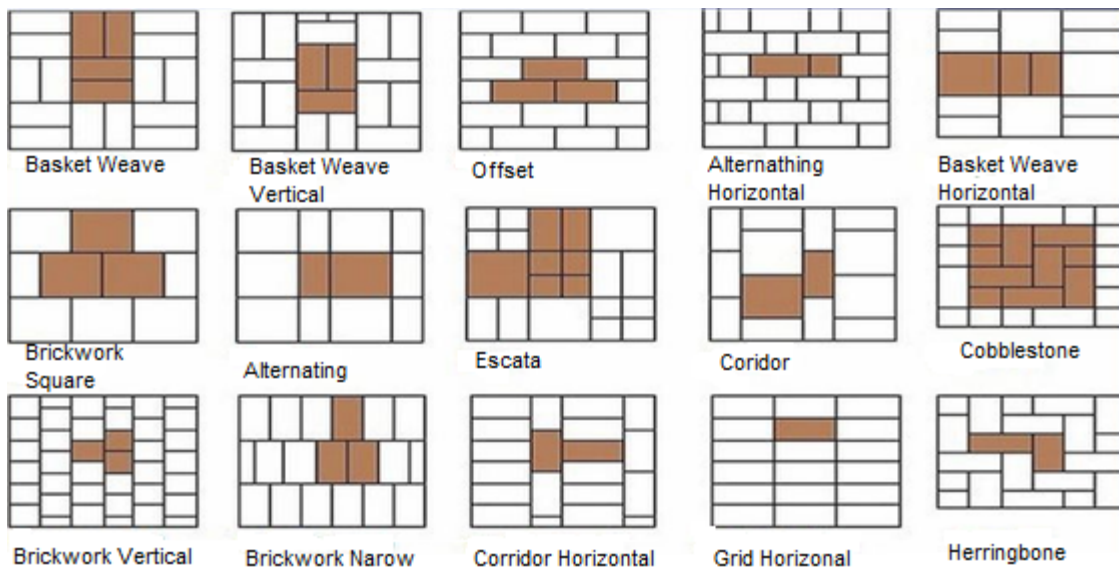


## Tiles & Backsplash



Largo White

### Backsplash Tile Pattern





# Trades Solutions Developments

Designing and Building For All Nations

## Tiles & Backsplash



**Taberna Rye**



**Oyster Split face Mosaic**



**Smoke Shimmer Glass**



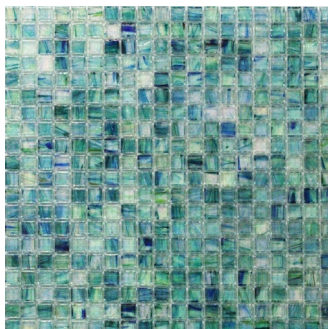
**Stainless Steel**



**Cappuccino**



**Castle Rock**



**Caribbean Ocean**



**Pearl Shell**



**Indonesian Stone**





# Trades Solutions Developments

Designing and Building For All Nations

## Luxury Bath

Luxury You Can Afford.....



Jet Body Spa



Rain Shower



Body Shower Spa

## Bath Decor



**Cabinet Space**



**Medicine Cabinet**



**Square Porcelain Sink**



**Decorative Mirror**



**Oval Ceramic Sink**



**Frameless Mirror**



**Paper Holder**



**18" Towel Bar**



**Shower Bar**



## Showers



**Dreamline Shower**



**Duel Siding Doors**



**Corner Shower**

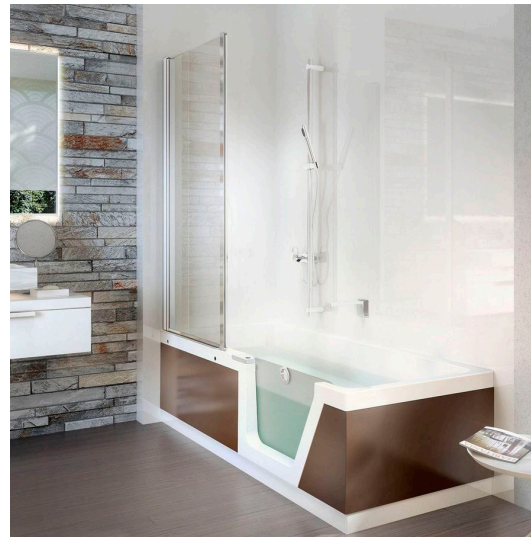


**Stream Shower**

**Bathtub Combinations**



**Dremline Aqua 60"**



**Walk-in Shower/Tub**



**Corner Shower/Tub**



**Seadream Shower/Tub**





# Trades Solutions Developments

Designing and Building For All Nations

## Bathtubs



**Bellini Bath**



**Catherine Bath**

**Walk-in Bath Tubs Saskatchewan  
Safety, Quality, Comfort**



**Independent Bath/Shower**



**Step-in Bath**



**Concord Bath**





# Trades Solutions Developments

Designing and Building For All Nations

## Welcoming Mudrooms



**Mudroom**



**Rustic**



**Boot Bench**



**3 Piece Locker Tower**



**Shoe Cabinet**



**Mudroom Bench**





# Trades Solutions Developments

Designing and Building For All Nations

## Fireplaces

54" Electric White Marble



- \*Adjustable Flame and temperature
- \*LED Flame - with or without heat
- \*Infrared heat will not dry out air
- \* Direct Vents
- \*Solar energy adaptable
- \* Clean air heat

40" Electric Stone



31" Electric Espresso



## Burlington Hearth



Enviro EX35 Inserted

## Ceilings



**Drywall Ceiling, Beams**



**Drywall Ceiling, Wood**



**Wood Ceiling, Wood Beam**



## Lighting



**12" to 16" Dome light (2 or 3 lights) for hallway/utility room/entrance/bedroom/kitchen**



**LED Bulb**



**Bathroom 4 Light Hollywood Style Vanity**



**Solar Outdoor Light**



**21 ½ Dining room  
Light**

**Corridor Light**



## Appliances



**16 Cube Top Freezer Refrigerator**



**21.4 Cube Side By Side Refrigerator**



**4.8 cu. ft. Electric Range**



**1.3 cu. ft. Stainless Steel Microwave**

### Appliances colors

- \*Stainless Steel
- \*Slate Black
- \*White





# Trades Solutions Developments

## Designing and Building For All Nations



Made by Charleene McBride